



Mervin Donnelly
061 696 8809
mervin.d@dpg.co.za

Contact Head Office - Dormehl
Lite

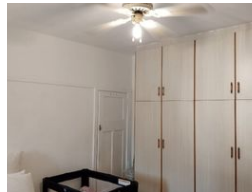
012 0000000

1170 Moulton Avenue
Waverley
0184



SOLE MANDATE

Web Ref DPR19432



R695,000

1.5 1

Monthly Bond Repayment R7,055.84

Calculated over 20 years at 10.75% with no deposit.

Transfer Costs R23,730.00 **Bond Costs** R17,680.00

These calculations are only a guide. Please ask your conveyancer for exact calculations.

Calling all first time buyers and investors!!!

Dormehl Phalane presents this spacious 1.5 bedroom apartment for sale in Musgrave Durban. The property consists of:
opposite Musgrave centre
close to all amenities
main bedroom fully fitted
fully fitted kitchen
half bedroom can fit a double bed
spacious lounge
1 open bay parking
family bathroom
shareblock building

To view this property please contact Mervin Donnelly

Features

Interior

Bedrooms	1.5
Bathrooms	1
Kitchens	1
Recep. Rooms	1
Furnished	No

Exterior

Carports / Parkings	1
Security	Yes
Pool	No
Views	False