



Odette Fourie
076 540 4090
odettefourie@dpg.co.za

Contact KZN North

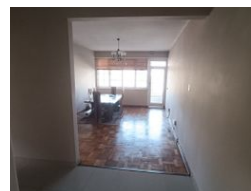
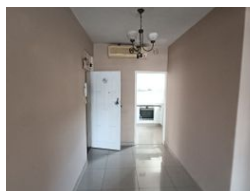
031 3500430

A1 Almil Centre
47 Ashley Avenue
Glenashley

FEATURED



Web Ref DPR21793



R1,250,000

🛏 2 🚿 2 🏠 1

Monthly Bond Repayment R12,479.75

Calculated over 20 years at 10.5% with no deposit.

Transfer Costs R36,219.00 **Bond Costs** R27,105.00

These calculations are only a guide. Please ask your conveyancer for exact calculations.

Monthly Levy R1,700 **Monthly Rates** R868

OLD WORLD CHARM. MODERN FINISHES

LOOKING FOR A GOOD BUY IN THE NEIGHBOURHOOD/

View this, Cute and Cozy airconditioned 2 ,1/2 bedroom unit with generous BIC . Modern Family shower with Vanity and Guest Loo. A well-designed ,convenient kitchen, upgraded cabinets with granite tops, undercounter oven ,glass hob and extractor fan.

Plumbed for dishwasher / washing machine , Providing plenty space for all the Modern, time-saving appliances .

The Open-plan ,functional Living/Dining Areas with Air-conditioner ,flows easily out to the Glass enclosed "Sun Porch" with slight Sea Views . Perfect to create that special "Nook/Space" for one to relax with a Book and a cup of Tea. Secured with Security door and burglar guards.

The floors are original Parquet flooring with Tiles ,where best suited ,with Air-conditioners in both bedrooms ,living and dining areas.

The Unit...

Features

Interior

Bedrooms	2
Bathrooms	2
Kitchens	1
Recep. Rooms	2
Furnished	No

Exterior

Garages	1
Security	Yes
Pool	No
Views	False

Sizes

Floor Size	81m²
Land Size	1,586m²