

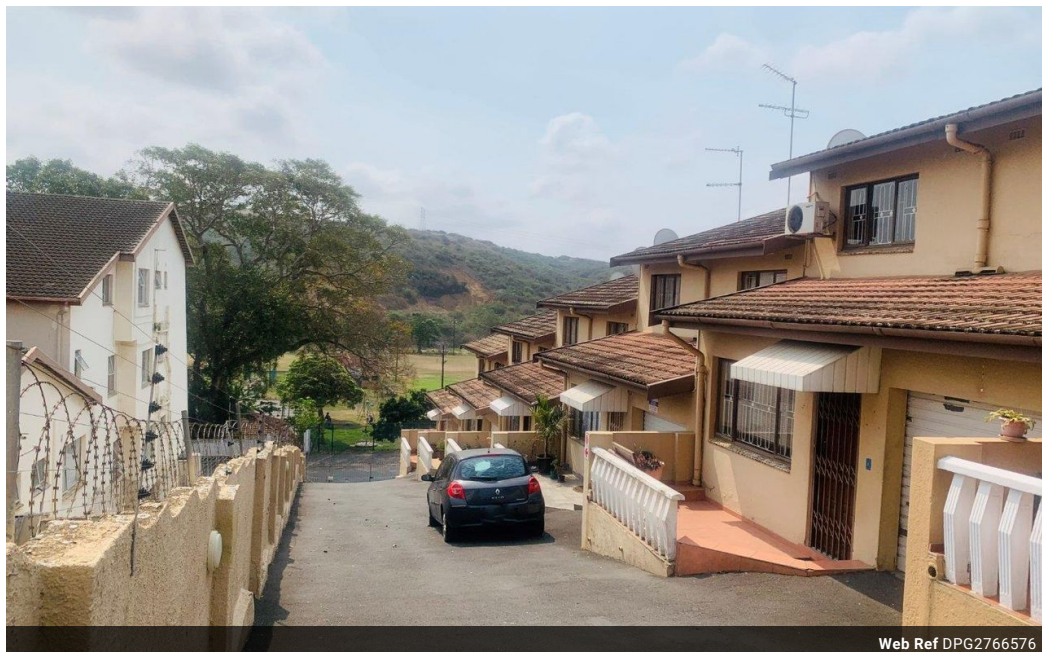


Brian Naidoo
083 955 0786
briann@dpg.co.za

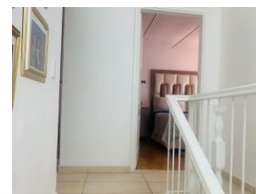
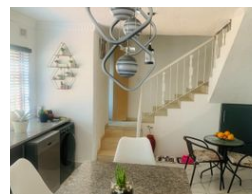
Contact Apex

031 2762023

558 Mountbatten Drive
Reservoir Hills
Durban
4090



Web Ref DPG2766576



R1,595,000

3 Bedrooms 2 Bathrooms 1 Garage

Monthly Bond Repayment R16,192.90

Calculated over 20 years at 10.75% with no deposit.

Transfer Costs R48,635.00 **Bond Costs** R28,990.00

These calculations are only a guide. Please ask your conveyancer for exact calculations.

Monthly Levy R1,000 **Monthly Rates** R850

Lock-up and go in Complex

Dormehl Phalane Property Group Apex introduces this fully secure property with plenty attractive features on offer.

The kitchen is stunning and well-maintained built-in cupboards with granite tops

The main bedroom has built-in cupboards and is newly renovated.

This cozy en-suite has a shower, built-in cupboards, hand basin and toilet.

There are two spacious bedrooms with built-in cupboards

There is beautiful lounge and dining area

There is a lock-up garage

Lovely entertainment area to create special memories with your loved ones.

This apartment is very close to all amenities!!!

Don't waste time!!! Call Brian to view

Features

Interior

Bedrooms	3
Bathrooms	2
Kitchens	1
Furnished	No

Exterior

Garages	1
Security	No
Pool	No
Views	False

Sizes

Land Size	126m ²
-----------	-------------------

