



Anne Heyes
083 9635330
anneheyes@dpg.co.za

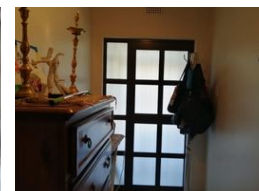
Contact Westville A-Team

031 2664343

1 Knightbridge,
16 Westville Road,
Westville



Web Ref DPG2759295



R2,499,000

4 2.5 2

Monthly Bond Repayment R25,370.57

Calculated over 20 years at 10.75% with no deposit.

Transfer Costs R115,640.00 **Bond Costs** R38,415.00

These calculations are only a guide. Please ask your conveyancer for exact calculations.

Monthly Rates R1,600

A home with comfort and space

Stunning home situated above road level and on level land . This amazing home comprises of 4 spacious bedrooms, open plan lounge , dining room and kitchen.
The kitchen is fully fitted and has a large gas stove. The main bedroom leads into another room that can be used as a study or a prayer room. The house is fully tiled .
Beautiful entertainment area , with a sparkling pool and jacuzzi. The garage was converted into an office , this can be easily made into a double garage.
Easy access to the M19, Pinetown, and central Westville.

Features

Pets Allowed		Yes			
Interior		Exterior		Sizes	
Bedrooms	4	Garages	2	Land Size	1,521m²
Bathrooms	2.5	Carports / Parkings	2		
Kitchens	1	Security	Yes		
Recep. Rooms	2	Dom. Accom.	1		
Studies	1	Pool	Yes		
Furnished	No	Views	True		
Extras					
Road Level / Aircon / Ceiling Fans					

