



Christy Du Preez
082 300 8532
christydupreez@dpg.co.za

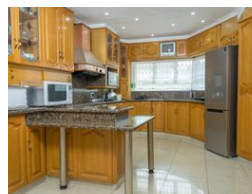
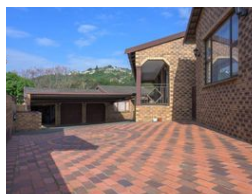
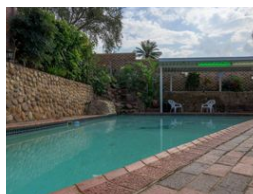
Contact Westville A-Team

031 2664343

1 Knightbridge,
16 Westville Road,
Westville



Web Ref DPR455



R1,850,000

4 3 3

Monthly Bond Repayment R18,781.74

Calculated over 20 years at 10.75% with no deposit.

Transfer Costs R66,206.00 **Bond Costs** R32,760.00

These calculations are only a guide. Please ask your conveyancer for exact calculations.

Monthly Rates R1,220

FACEBRICK BEAUTY

If you have a large family, then this home is ideal for you. Its offering four spacious bedrooms, three bathrooms as the other two bedrooms have en-suites. Grandparents can be easily accommodated by the granny flat outside to enjoy their privacy and space. The kitchen is fully fitted with granite tops, solid wood cupboards close to the dining room area. The first lounge is big, airy and bright flowing into the sparkling swimming pool, with a waterfall feature and the built-in braai area. Second TV lounge is an acceptable which is cozy and will be enjoyed by family members. The air-cons come handy for winter and summer days. Situated in a good neighborhood and quite street. Facebrick homes are known for low maintenance. It has triple automated garages, triple covered carport and more parking space available. This home is fully...

Features

Pets Allowed	Yes				
Interior		Exterior		Sizes	
Bedrooms	4	Garages	3	Land Size	929m²
Bathrooms	3	Carports / Parkings	3		
Kitchens	1	Security	Yes		
Recep. Rooms	3	Dom. Accom.	1		
Furnished	No	Pool	Yes		
		Views	True		