



Ningi Ngwenya
071 301 8200
ningingwenya@dpg.co.za

Contact Pinetown

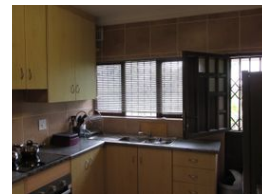
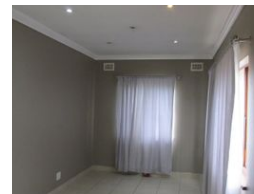
031 8229071

39 Glenugie Road
Pinetown



SOLE MANDATE

Web Ref DPR2259



R1,195,000

2 1

Monthly Bond Repayment R12,131.99

Calculated over 20 years at 10.75% with no deposit.

Transfer Costs R32,749.00 **Bond Costs** R25,220.00

These calculations are only a guide. Please ask your conveyancer for exact calculations.

Monthly Rates R600

PERFECTLY SITUATED WITH FULL GRANNY FLAT

A beautiful modern family home with bronze aluminium windows with spacious open plan settings, set on 544 sqm land, tiled throughout, perfectly fitted kitchen, all bedrooms fitted, open plan lounge dining set up. One bedroom granny flat with kitchenette, bathroom and lounge. Huge level land that can built another fully structured house. Burglar guarded, full electric fence with auto gates.

Features

Interior

Bedrooms	2
Bathrooms	1
Kitchens	1
Recep. Rooms	1
Furnished	No

Exterior

Carports / Parkings	1
Security	Yes
Pool	No
Views	False

Sizes

Land Size	544m ²
-----------	-------------------