



**Noleen Dunn**  
084 803 9972  
noleendunn@dpg.co.za



**Nicci Arnott**  
071 887 0870  
nicciarnott@dpg.co.za

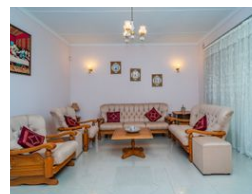
Contact Westville

031 2669091

Shop 1, Gordana Court,  
22/26 Salisbury Avenue,  
Westville



Web Ref DPR16319



**R1,380,000**

3 2.5 1

**Monthly Bond Repayment** R14,010.16

Calculated over 20 years at 10.75% with no deposit.

**Transfer Costs** R40,017.00 **Bond Costs** R27,105.00

These calculations are only a guide. Please ask your conveyancer for exact calculations.

**Monthly Rates** R1,270

## SPACIOUS FAMILY HOME

This spacious gem offers 3 beautifully appointed bedrooms, 2.5 stylishly tiled bathrooms, a luxurious sunken lounge, and a cozy TV area that flows seamlessly into the main living space. The thoughtfully designed kitchen provides ample workspace, storage, and extends to a generous scullery. With plenty of parking, a lock-up garage, solar geyser, and 24-hour security (including indoor and outdoor beams), this home truly has it all.

Upon entering, you'll be welcomed by a long, elegant driveway and a veranda with a sky roof that bathes the space in natural light. Step through the hallway into the stunning sunken lounge, featuring sliding doors – perfect for entertaining. If you're a nature lover or have a green thumb, the outdoor space is ideal for creating your very own nursery.

And there's more... A separate 2-bedroom granny...

## Features

**Pets Allowed** Yes

### Interior

Bedrooms	3
Bathrooms	2.5
Kitchens	1
Recep. Rooms	2
Studies	1
Furnished	No

### Exterior

Garages	1
Carports / Parkings	4
Security	Yes
Dom. Accom.	1
Pool	No
Views	True

### Sizes

Land Size	1,030m²
-----------	---------

