



**Jenny Grant**  
082 655 2117  
jennygrant@dpg.co.za

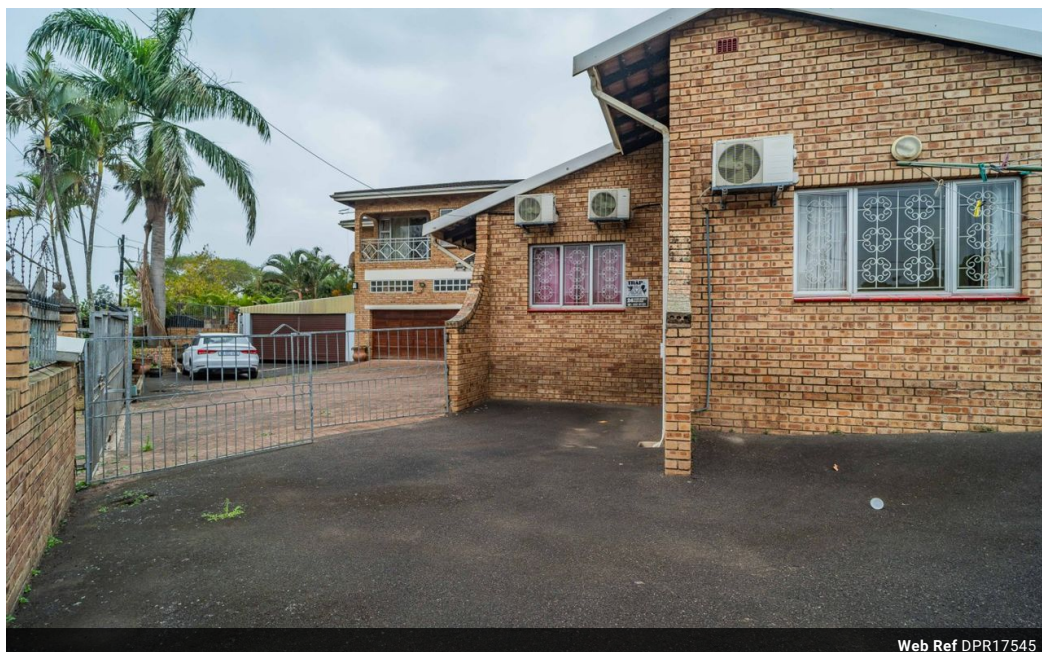


**Sheri Minter**  
082 224 0400  
sheriminter@dpg.co.za

Contact Westville

031 2669091

Shop 1, Gordana Court,  
22/26 Salisbury Avenue,  
Westville



Web Ref DPR17545



**R2,200,000**

🛏 5 🚿 4 🚗 3

**Monthly Bond Repayment** R22,335.04

Calculated over 20 years at 10.75% with no deposit.

**Transfer Costs** R89,947.00 **Bond Costs** R34,625.00

These calculations are only a guide. Please ask your conveyancer for exact calculations.

**Monthly Rates** R2,200

## PRIME RESERVOIR HILLS FAMILY HOME

Nestled in the sought-after area of Reservoir Hills, this property offers endless possibilities, whether you're seeking a spacious family home or a smart investment like the potential for a 10-bedroom student accommodation, ensuring excellent rental returns.

Key Features:

**Generous Main House:** This expansive home boasts 5 generously sized bedrooms, 2 inviting lounges, 4 bathrooms, a formal dining area, and a fully equipped kitchen. With modern touches such as top-tier appliances, double automated garages, and air-conditioning, this property offers both comfort and convenience.

**Luxurious Master Suite:** The master bedroom provides a private retreat, featuring ample closet space, air-conditioning, and a private en-suite bathroom for ultimate relaxation.

**Elegant Living Spaces:** Bright and airy, the lounges are ideal for family...

## Features

Pets Allowed		Yes			
Interior		Exterior		Sizes	
Bedrooms	5	Garages	3	Floor Size	326m²
Bathrooms	4	Carports / Parkings	2	Land Size	675m²
Kitchens	1	Security	Yes		
Recep. Rooms	3	Pool	No		
Studies	1	Views	True		
Furnished	No				

