

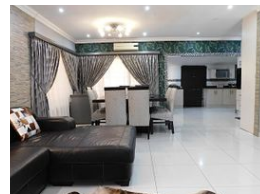
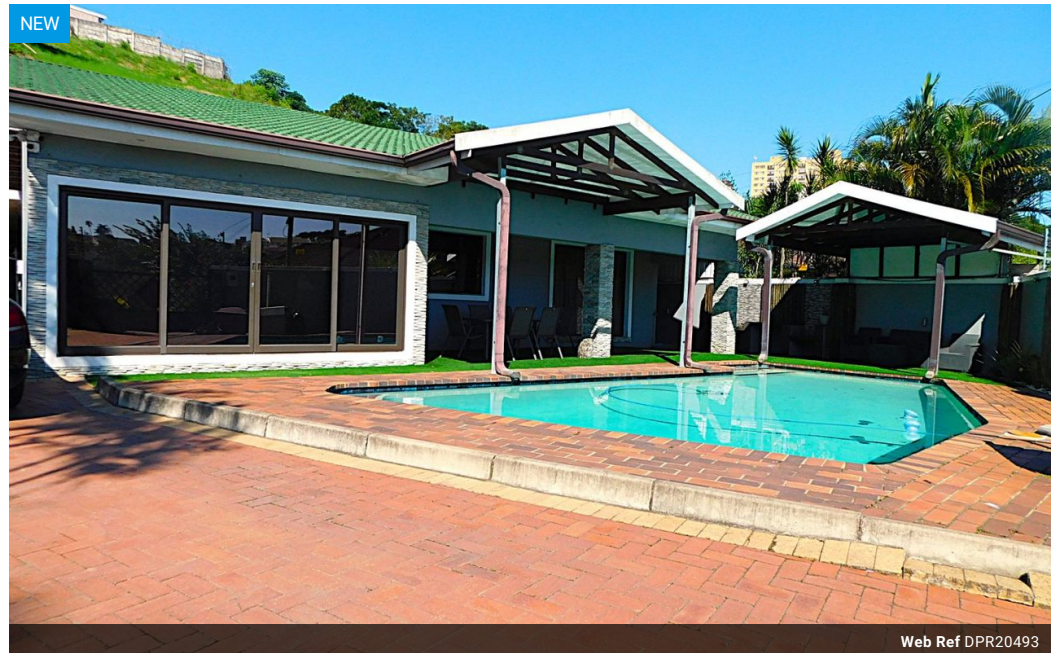


**Christy Du Preez**  
082 300 8532  
christydupreez@dpg.co.za

Contact Westville A-Team

031 2664343

1 Knightbridge,  
16 Westville Road,  
Westville



**R1,995,000**

5 2

**Monthly Bond Repayment** R20,253.82

Calculated over 20 years at 10.75% with no deposit.

**Transfer Costs** R74,906.00 **Bond Costs** R32,760.00

These calculations are only a guide. Please ask your conveyancer for exact calculations.

**Monthly Rates** R1,650

Welcome to your dream home

This stunning 4 bedroom residence offers the perfect blend of comfort, style and outdoor living. 2 Jojo tanks.

## Features

**Pets Allowed** Yes

### Interior

|              |    |
|--------------|----|
| Bedrooms     | 5  |
| Bathrooms    | 2  |
| Kitchens     | 1  |
| Recep. Rooms | 2  |
| Studies      | 1  |
| Furnished    | No |

### Exterior

|                     |       |
|---------------------|-------|
| Carports / Parkings | 4     |
| Security            | Yes   |
| Pool                | Yes   |
| Views               | False |

### Sizes

|           |         |
|-----------|---------|
| Land Size | 1,104m² |
|-----------|---------|