



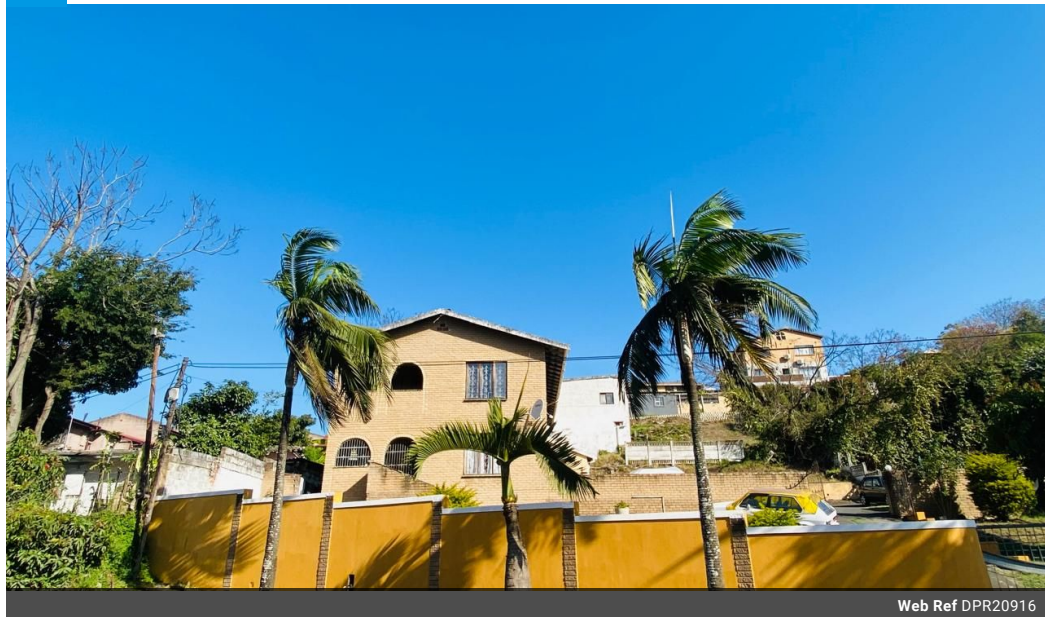
Brian Naidoo
083 955 0786
briann@dpg.co.za

Contact Apex

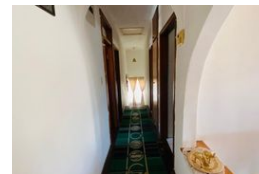
031 2762023

558 Mountbatten Drive
Reservoir Hills
Durban
4090

NEW



Web Ref DPR20916



R1,300,000

🛏 6 🚿 2 🚗 1

Monthly Bond Repayment R12,978.94

Calculated over 20 years at 10.5% with no deposit.

Transfer Costs R37,719.00 **Bond Costs** R27,105.00

These calculations are only a guide. Please ask your conveyancer for exact calculations.

Lovely Family Home for Sale in a Prime Location!

Dormehl Phalane Property Group Apex offers this impressive property, perfectly blending space, comfort, and convenience. This property boasts:

Spacious Layout: 6 bedrooms with ample space for a growing family or entertaining guests.

Lounges: 2 separate lounges for relaxation and entertainment.

Bathroom Facilities: Separate toilet and shower for added convenience.

Secure Parking: Single lock-up garage plus parking for up to 8 cars.

Recreational Amenities Nearby: Easy access to tennis courts, a golf course, and soccer fields for sports enthusiasts.

Convenient Location:

Close proximity to a high school and primary school.

Reservoir Hills Mall for shopping needs

Features

Interior

Bedrooms	6
Bathrooms	2
Kitchens	1
Recep. Rooms	3
Furnished	No

Exterior

Garages	1
Carports / Parkings	8
Security	Yes
Pool	No
Views	False

Sizes

Land Size	950m²
-----------	-------

