



**Mervin Donnelly**  
061 696 8809  
mervin.d@dpg.co.za

Contact Head Office - Dormehl  
Lite

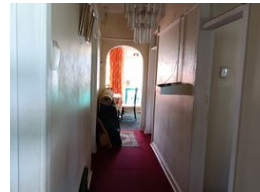
012 0000000

1170 Moulton Avenue  
Waverley  
0184



SOLE MANDATE

Web Ref DPR1572



**R1,020,000**

3 3

**Monthly Bond Repayment** R10,183.47

Calculated over 20 years at 10.5% with no deposit.

**Transfer Costs** R32,851.00 **Bond Costs** R25,220.00

These calculations are only a guide. Please ask your conveyancer for exact calculations.

Family home for sale in Kenville!!!

Dormehl Phalane proudly presents this 3 bedroom family home for sale in Kenville. This property consists of:

Huge land  
3 spacious bedrooms with built in cupboards  
ample parking  
fully fitted kitchen  
family bathroom  
2 flatlets  
spacious lounge

To view this property please contact Mervin Donnelly

## Features

### Interior

|              |    |
|--------------|----|
| Bedrooms     | 3  |
| Bathrooms    | 3  |
| Kitchens     | 3  |
| Recep. Rooms | 2  |
| Furnished    | No |

### Exterior

|          |       |
|----------|-------|
| Security | No    |
| Pool     | No    |
| Views    | False |