



**Mervin Donnelly**  
061 696 8809  
mervin.d@dpg.co.za

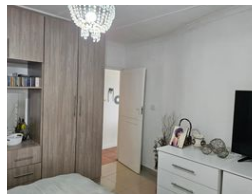
Contact Head Office - Dormehl  
Lite

012 0000000

1170 Moulton Avenue  
Waverley  
0184



Web Ref DPR17130



**R1,150,000**

2 1

**Monthly Bond Repayment** R11,675.13

Calculated over 20 years at 10.75% with no deposit.

**Transfer Costs** R32,749.00 **Bond Costs** R25,220.00

These calculations are only a guide. Please ask your conveyancer for exact calculations.

**Monthly Levy** R3,100 **Monthly Rates** R600

Spacious 2 bedroom simplex for sale in Sherwood!!!

Dormehl Phalane proudly presents this spacious 2 bedroom apartment for sale in Sherwood. The property consists of the following:

- 2 fully fitted spacious bedrooms
- open plan lounge
- family bathroom
- garden
- 1 undercover parking
- 4 open bay parkings
- size: 75 square meters
- swimming pool in the complex

To view this property please contact Mervin Donnelly

## Features

### Interior

Bedrooms	2
Bathrooms	1
Kitchens	1
Recep. Rooms	1
Furnished	No

### Exterior

Carports / Parkings	5
Security	Yes
Pool	Yes
Views	False