

Christy Du Preez
082 300 8532
christydupreez@dpg.co.za

Contact Westville A-Team

031 2664343

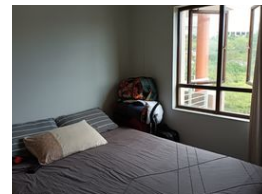
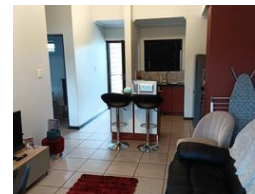
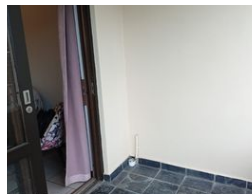
1 Knightbridge,
16 Westville Road,
Westville

FEATURED



SOLE MANDATE

Web Ref DPR1420



R950,000

🛏 1 🚿 1

Monthly Bond Repayment R9,644.68

Calculated over 20 years at 10.75% with no deposit.

Transfer Costs R30,412.00 **Bond Costs** R23,335.00

These calculations are only a guide. Please ask your conveyancer for exact calculations.

Monthly Levy R1,850 **Monthly Rates** R950

Modern & Secure!

Ground floor, modern 1 bedroom unit in Westwood Estate.

Open plan living areas & doors leading out onto a covered patio.

If you want a lock up & go, security & a place to call home, give us a call!

Features

Interior

Bedrooms	1
Bathrooms	1
Kitchens	1
Recep. Rooms	2
Furnished	No

Exterior

Carports / Parkings	1
Security	Yes
Pool	Yes
Views	True

Sizes

Floor Size	46m ²
------------	------------------