



**Christy Du Preez**  
082 300 8532  
christydupreez@dpg.co.za

Contact Westville A-Team

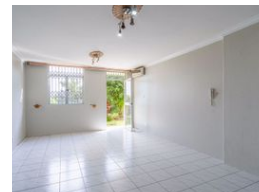
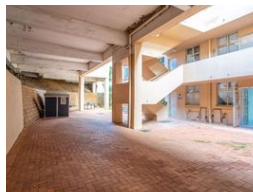
031 2664343

1 Knightbridge,  
16 Westville Road,  
Westville

NEW



Web Ref DPR20029



**R1,195,000**

2 1

**Monthly Bond Repayment** R12,131.99

Calculated over 20 years at 10.75% with no deposit.

**Transfer Costs** R32,749.00 **Bond Costs** R25,220.00

These calculations are only a guide. Please ask your conveyancer for exact calculations.

**Monthly Levy** R1,300 **Monthly Rates** R1,100

## Central Sherwood - 2 Bed Apartment

Ideally situated in sherwood you will find this neat and secure 2 bedroom apartment.

The unit is in close proximity to Masjid Saliheen, the M13 and the N3.

This unit consists of an open plan lounge, dining room and kitchen. Lounge leads out onto garden. Both bedrooms are complete with built in cupboards.

## Features

### Interior

Bedrooms	2
Bathrooms	1
Kitchens	1
Recep. Rooms	2
Furnished	No

### Exterior

Carports / Parkings	1
Security	Yes
Pool	No
Views	False

### Sizes

Floor Size	71m²
------------	------