

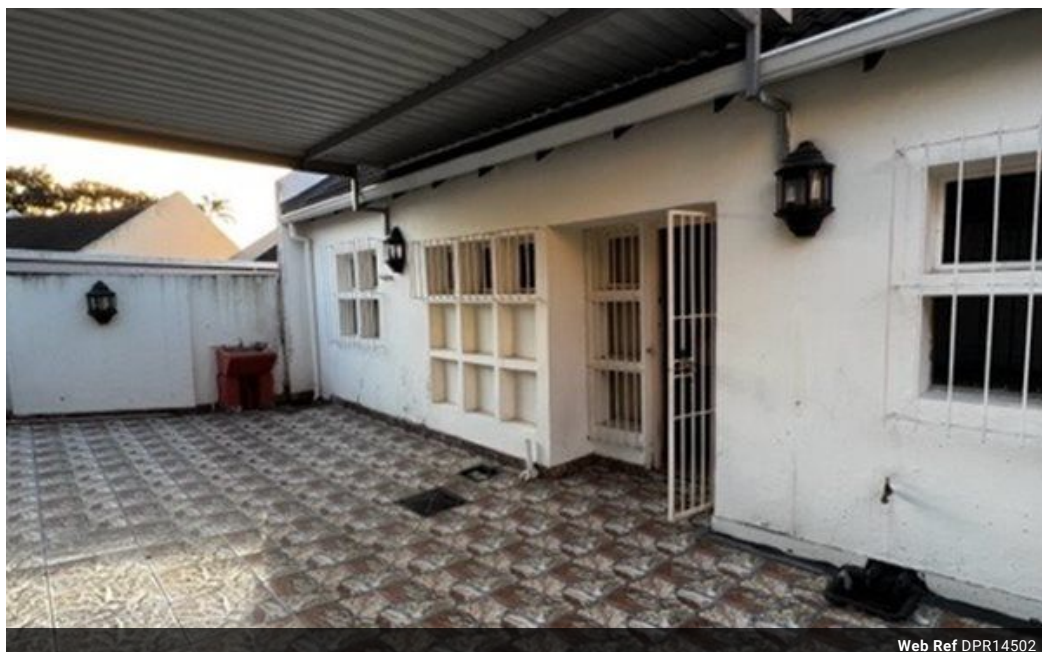


Anne Heyes
083 9635330
annehey@dpd.co.za

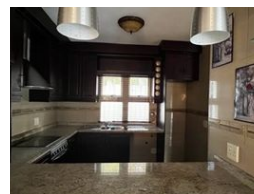
Contact Westville A-Team

031 2664343

1 Knightbridge,
16 Westville Road,
Westville



Web Ref DPR14502



R1,025,000

2 1 2

Monthly Bond Repayment R10,406.10

Calculated over 20 years at 10.75% with no deposit.

Transfer Costs R32,749.00 **Bond Costs** R25,220.00

These calculations are only a guide. Please ask your conveyancer for exact calculations.

Monthly Levy R2,329 **Monthly Rates** R873

Immaculate stepless garden unit in 24hr security gated complex!

Charming Single-Level Residence in a Secure Complex

Discover this impeccably maintained single-level residence in a highly sought-after complex offering 24-hour security. This delightful simplex boasts a well-kept, child-friendly garden, providing a peaceful retreat. Conveniently located near UKZN, Westwood Mall, with easy access to the M13 and just a five-minute drive to the CBD.

This pet-friendly complex combines safety with affordability, featuring reasonable rates and levies. Whether you're starting a new chapter or seeking a tranquil retirement home, this property offers an ideal setting for both. Don't miss the opportunity to make this stepless lock-up-and-go simplex your own.

This is also a corner unit so you have lots of privacy for entertaining and extra parking.

Features

Pets Allowed	Yes				
Interior		Exterior		Sizes	
Bedrooms	2	Garages	2	Floor Size	75m²
Bathrooms	1	Carports / Parkings	2		
Kitchens	1	Security	Yes		
Recep. Rooms	2	Pool	No		
Furnished	No	Views	False		