



**Jenny Grant**  
082 655 2117  
jennygrant@dpg.co.za



**Sheri Minter**  
082 224 0400  
sheriminter@dpg.co.za

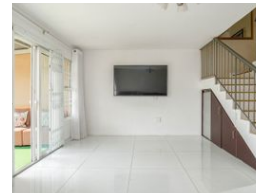
Contact Westville

031 2669091

Shop 1, Gordana Court,  
22/26 Salisbury Avenue,  
Westville



Web Ref DPR15913



**R1,375,000**

3 2

**Monthly Bond Repayment** R13,959.40

Calculated over 20 years at 10.75% with no deposit.

**Transfer Costs** R39,867.00 **Bond Costs** R27,105.00

These calculations are only a guide. Please ask your conveyancer for exact calculations.

**Monthly Levy** R2,400

## Elegant Townhouse in Secure Sherwood Complex

View by Appointment: Discover the perfect blend of comfort and security in this beautiful townhouse, located in the sought-after Sherwood area. Nestled within a safe, secure complex with 24/7 guard protection, this home features 3 spacious bedrooms with built-in cupboards, including a master suite with an ensuite bathroom. The living space boasts a seamless open-plan design, with a lounge, dining room, and kitchen all elegantly tiled, creating a welcoming environment for family gatherings and entertaining guests. The mix of tile and laminate flooring throughout adds a touch of sophistication to the home's interior. The home boast 3 Aircons in total and comes fully furnished. Outside you have a access to a private washing line and scullery area

With 2 well-appointed bathrooms and a garage, this townhouse ensures ample space and...

## Features

### Interior

Bedrooms	3
Bathrooms	2
Kitchens	1
Recep. Rooms	2
Furnished	No

### Exterior

Carports / Parkings	2
Security	Yes
Pool	Yes
Views	True

### Sizes

Floor Size	120m²
------------	-------

