



Mervin Donnelly
061 696 8809
mervin.d@dpg.co.za

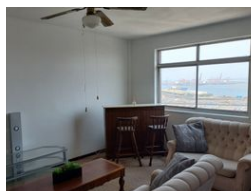
Contact Head Office - Dormehl
Lite

012 0000000

1170 Moulton Avenue
Waverley
0184



Web Ref DPR897



R698,000

🛏 2 🚿 2

Monthly Bond Repayment R6,968.69

Calculated over 20 years at 10.5% with no deposit.

Transfer Costs R23,709.00 **Bond Costs** R17,680.00

These calculations are only a guide. Please ask your conveyancer for exact calculations.

Monthly Levy R2,400

Spacious 2 bedroom apartment in South beach for sale!!!!

Dormehl Phalane proudly presents this spacious 2 bedroom apartment for sale in South beach. The property consists of:
size 92 sqm
2 spacious bedrooms with built in cupboards
1 MES
1 family bathroom
spacious lounge/dining room
fitted kitchen with built in cupboards HOB and UCO
1 undercover parking
harbour views
close to all amenities

To view this property please contact Mervin Donnelly

Features

Interior

Bedrooms	2
Bathrooms	2
Kitchens	1
Recep. Rooms	1
Furnished	No

Exterior

Security	No
Pool	No
Views	False

Sizes

Floor Size	92m²
------------	------