



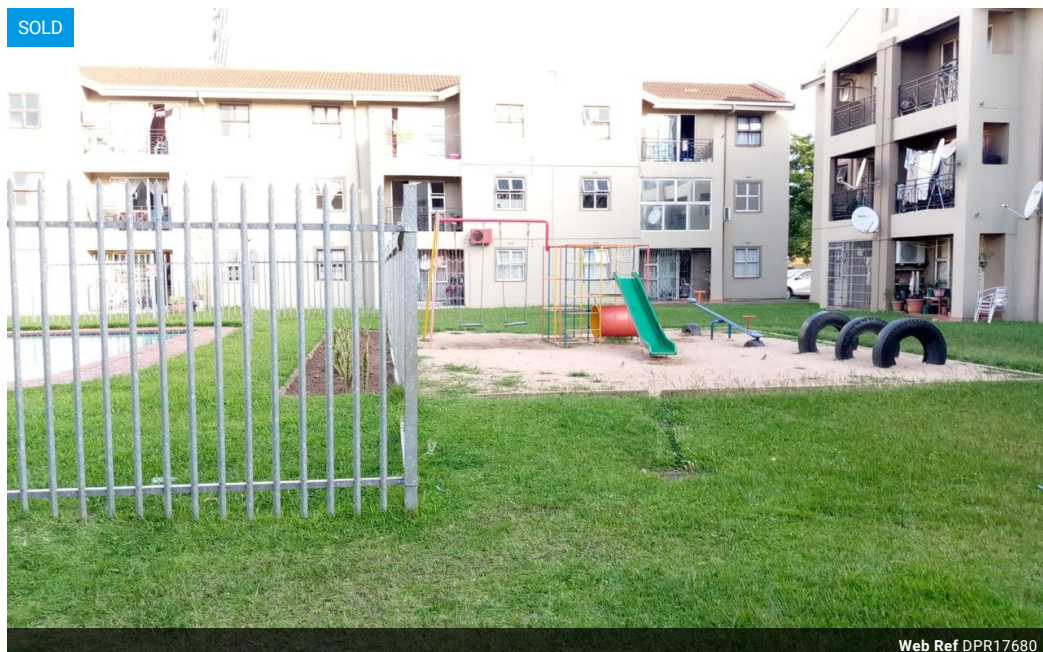
Stacy Fernandez
069 354 3613
stacy.f@dpg.co.za

Contact Head Office - Dormehl
Lite

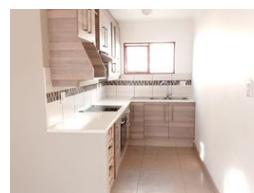
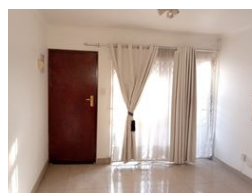
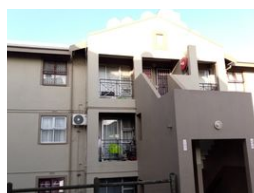
012 0000000

1170 Moulton Avenue
Waverley
0184

SOLD



Web Ref DPR17680



R580,000

2 1

Monthly Bond Repayment R5,888.33

Calculated over 20 years at 10.75% with no deposit.

Transfer Costs R21,217.00 **Bond Costs** R15,795.00

These calculations are only a guide. Please ask your conveyancer for exact calculations.

Monthly Levy R910 **Monthly Rates** R460

Modern 2 Bedroom Apartment for Sale!

Dormehl Phalane Property Group offers you this modern 2 bedroom apartment for sale. This unit is situated in a well maintained complex with communal pool and braai area. Suitable for investment or small family. Its fully fitted with open plan lounge and dining area. One brand new fitted bathroom. It also has one open parking bay. Great investment opportunity. Safe and secured complex 24 Hr security. Low levies and rates. Close to all amenities.

Features

Interior

Bedrooms	2
Bathrooms	1
Kitchens	1
Recep. Rooms	1
Furnished	No

Exterior

Carports / Parkings	1
Security	Yes
Pool	Yes
Views	True

Sizes

Floor Size	44m ²
------------	------------------