



Christy Du Preez
082 300 8532
christydupreez@dpg.co.za

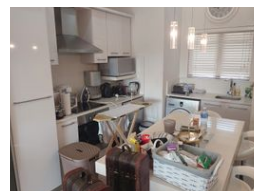
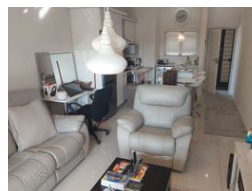
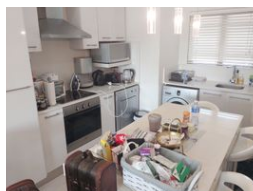
Contact Westville A-Team

031 2664343

1 Knightbridge,
16 Westville Road,
Westville



Web Ref DPR13013



R1,849,000

2 2

Monthly Bond Repayment R18,771.58

Calculated over 20 years at 10.75% with no deposit.

Transfer Costs R66,146.00 **Bond Costs** R32,760.00

These calculations are only a guide. Please ask your conveyancer for exact calculations.

Monthly Levy R2,500 **Monthly Rates** R1,500

Not a cent to be spent!

Out of this world finishes, with not one cent to be spent on this spacious 2 bedroom unit in secure Westwood Estate.

Secure, lock up and go and a well maintained complex to be apart of.

This unit has scenic views, each section has its own clubhouse and secure parking.

Call us to view!

Features

Interior

Bedrooms	2
Bathrooms	2
Kitchens	1
Recep. Rooms	2
Furnished	No

Exterior

Carports / Parkings	1
Security	Yes
Pool	Yes
Views	True

Sizes

Floor Size	74m²
------------	------