

Christy Du Preez
082 300 8532
christydupreez@dpg.co.za

Contact Westville A-Team

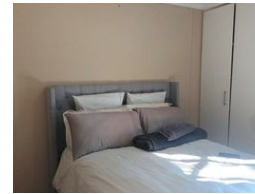
031 2664343

1 Knightbridge,
16 Westville Road,
Westville



SOLE MANDATE

Web Ref DPR13912



R1,400,000

2 2

Monthly Bond Repayment R13,977.32

Calculated over 20 years at 10.5% with no deposit.

Transfer Costs R40,719.00 **Bond Costs** R27,105.00

These calculations are only a guide. Please ask your conveyancer for exact calculations.

Entry Level!

Seldomly do we get a unit in Westwood Estate which is entry level - meaning no stairs!

This unit has 2 bedrooms, 2 bathrooms.

Open plan kitchen, lounge and dining room with doors onto a covered balcony.
Great security, close to Westwood mall.

Features

Interior

Bedrooms	2
Bathrooms	2
Kitchens	1
Recep. Rooms	2
Furnished	No

Exterior

Carports / Parkings	1
Security	Yes
Pool	Yes
Views	True