



**Christy Du Preez**  
082 300 8532  
christydupreez@dpg.co.za

Contact Westville A-Team

031 2664343

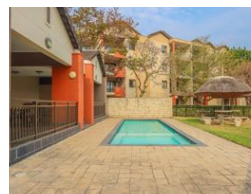
1 Knightbridge,  
16 Westville Road,  
Westville

## FEATURED



SOLE MANDATE

Web Ref DPR21287



## R1,495,000

2 2

**Monthly Bond Repayment** R14,925.78

Calculated over 20 years at 10.5% with no deposit.

**Transfer Costs** R45,737.00 **Bond Costs** R28,990.00

These calculations are only a guide. Please ask your conveyancer for exact calculations.

**Monthly Levy** R2,671 **Monthly Rates** R1,278

## A Rare Gem awaits in Westwood Estate, Durban: The Pinnacle of Modern Convenience

Unlock the door to your dream home with this exquisite entry-level unit nestled in the heart of Westville, Durban. Priced competitively at R1,495,000, this rare find is akin to discovering something as elusive as hen's teeth. Perfectly suited for the first-time homebuyer or savvy investor, this splendid gem offers unparalleled value and elegance.

Situated in the prestigious Westwood Estate, this apartment transcends ordinary living. Enjoy the convenience of a no-stairs, entry level unit that boasts one beautifully appointed bedroom and two modern bathrooms. The open-plan living areas are designed for both comfort and style, seamlessly connecting to a state-of-the-art kitchen where culinary dreams come to life.

Step outside onto your private patio and be mesmerized by scenic views that redefine tranquility. Whether you are...

## Features

### Interior

Bedrooms	2
Bathrooms	2
Kitchens	1
Recep. Rooms	2
Furnished	No

### Exterior

Carports / Parkings	1
Security	Yes
Pool	Yes
Views	True

### Sizes

Floor Size	79m²
------------	------