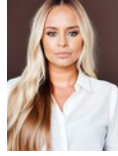




Lindi Honey
082 444 8996
lindhoney@dpg.co.za



Christy Du Preez
082 300 8532

christydupreez@dpg.co.za

Contact Westville A-Team

031 2664343

1 Knightbridge,
16 Westville Road,
Westville



Web Ref DPG2765516



R3,900,000

5 5 4

Monthly Bond Repayment R39,593.93

Calculated over 20 years at 10.75% with no deposit.

Transfer Costs R270,050.00 **Bond Costs** R51,610.00

These calculations are only a guide. Please ask your conveyancer for exact calculations.

Monthly Rates R2,750

5 Bedroom home in Central Westville

Luxurious home that must be viewed to be appreciated. A welcoming entrance hall with marble tiles awaits a new owner. This warm abode has a WOW appeal. This home is spacious and big enough for the Brady Bunch.

Comprises of five massive bedrooms all with ensuites, stunning kitchen with beechwood built in cupboards and granite tops, huge dining room to entertain a large family, two double volume lounges, sunroom, beautiful entertainment area with a sparkling pool. Gorgeous scenic views.

Zoned for the Westville Schools and easy access to the M13, Westwood Mall and the Sherwood and Westville Mosque.

Call us for a viewing!

Features

Pets Allowed		Yes			
Interior				Exterior	
Bedrooms	5			Garages	4
Bathrooms	5			Carports / Parkings	3
Kitchens	1			Security	Yes
Recep. Rooms	4			Pool	Yes
Studies	1			Views	True
Furnished	No				
				Sizes	
				Land Size	3,856m ²

Extras

Facing: Level Road, Roof: Tile, Style: Contemporary, Modern, Open Plan, Classical, Architect Designed, Wall: Brick, Plaster, Concrete, Window: Aluminium

