



Noleen Dunn
084 803 9972
noleendunn@dpg.co.za



Nicci Arnott
071 887 0870
nicciarnott@dpg.co.za

Contact Westville

031 2669091

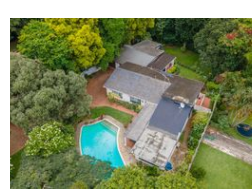
Shop 1, Gordana Court,
22/26 Salisbury Avenue,
Westville

FEATURED



SOLE MANDATE

Web Ref DPR11654



R2,650,000

4 2 1

Monthly Bond Repayment R26,903.57

Calculated over 20 years at 10.75% with no deposit.

Transfer Costs R129,887.00 **Bond Costs** R40,300.00

These calculations are only a guide. Please ask your conveyancer for exact calculations.

Monthly Rates R2,800

CENTRAL WESTVILLE 4 BED FAMILY HOME + FLAT

4 bed family home within walking distance of both Westville Boys High School and the Westville Soofie Mosque, and mere minutes from all of the local Westville shopping centres, restaurants and pubs.

This much loved family home has a lot to offer with 4 spacious bedrooms, 2 full bathrooms (one with a shower and the other with a bath) and a cosy study/home office. The light-filled lounge with its feature fireplace flows into a TV/Family room, both of which feature sliding doors leading out to the covered verandah with the sparkling pool and garden beyond. There is a lovely separate dining-room and the kitchen offers plenty of counter space and storage. The beautiful parquet floors, wooden doors and windows and lofty vaulted ceilings give this gorgeous home added character. There is a single garage and plenty of extra parking....

Features

Pets Allowed	Yes				
Interior		Exterior		Sizes	
Bedrooms	4	Garages	1	Land Size	2,295m²
Bathrooms	2	Carports / Parkings	4		
Kitchens	1	Security	Yes		
Recep. Rooms	3	Pool	Yes		
Studies	1	Views	True		
Furnished	No				

Extras

Air Conditioner Below Road Burglar Bars Built in Wardrobes Cooling Fans Courtyard Covered Patio Electric Gate Fireplace Flatlet Gunitein Ground Intercom Parquet Floors Scullery Security Gate Sliding Doors

