



Noleen Dunn
084 803 9972
noleendunn@dpg.co.za

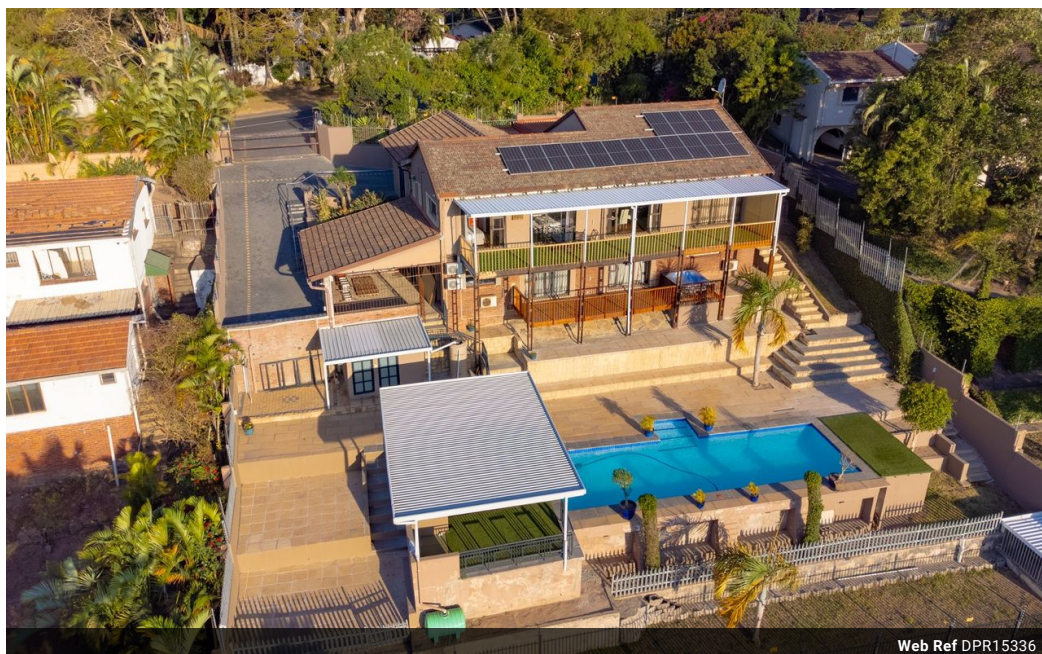


Nicci Arnott
071 887 0870
nicciarnott@dpg.co.za

Contact Westville

031 2669091

Shop 1, Gordana Court,
22/26 Salisbury Avenue,
Westville



Web Ref DPR15336



R3,950,000

3 3 3

Monthly Bond Repayment R40,101.54

Calculated over 20 years at 10.75% with no deposit.

Transfer Costs R275,550.00 **Bond Costs** R51,610.00

These calculations are only a guide. Please ask your conveyancer for exact calculations.

Monthly Rates R2,320

WARM AND ELEGANT FAMILY HOME!

Ideally situated in central Westville, a stone's throw away from Westville Boys High School, you will find this amazing 4 bedroom family home. This home offers a perfect blend of comfort, style, and modern elegance.

Park your car in the double garage and enter the expansive open-plan lounge, dining and kitchen area. The lounge is an inviting space with expansive glass windows that fill the room with natural light. The dining room features a sliding door that leads to the balcony, perfect for enjoying meals with an amazing view. The kitchen features quartz countertops and is complete with a scullery which is equipped with both washing machine and dishwasher connections.

This home features a spacious and luxurious main bedroom with built-in cupboards, air conditioning, and sliding doors that open to a private balcony which...

Features

Pets Allowed Yes

Interior

Bedrooms	3
Bathrooms	3
Kitchens	1
Recep. Rooms	2
Studies	1
Furnished	No

Exterior

Garages	3
Carports / Parkings	3
Security	Yes
Dom. Accom.	1
Pool	Yes
Views	True

Sizes

Land Size	5,534m²
-----------	---------

