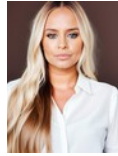




**Lindi Honey**  
082 444 8996  
lindhoney@dpg.co.za



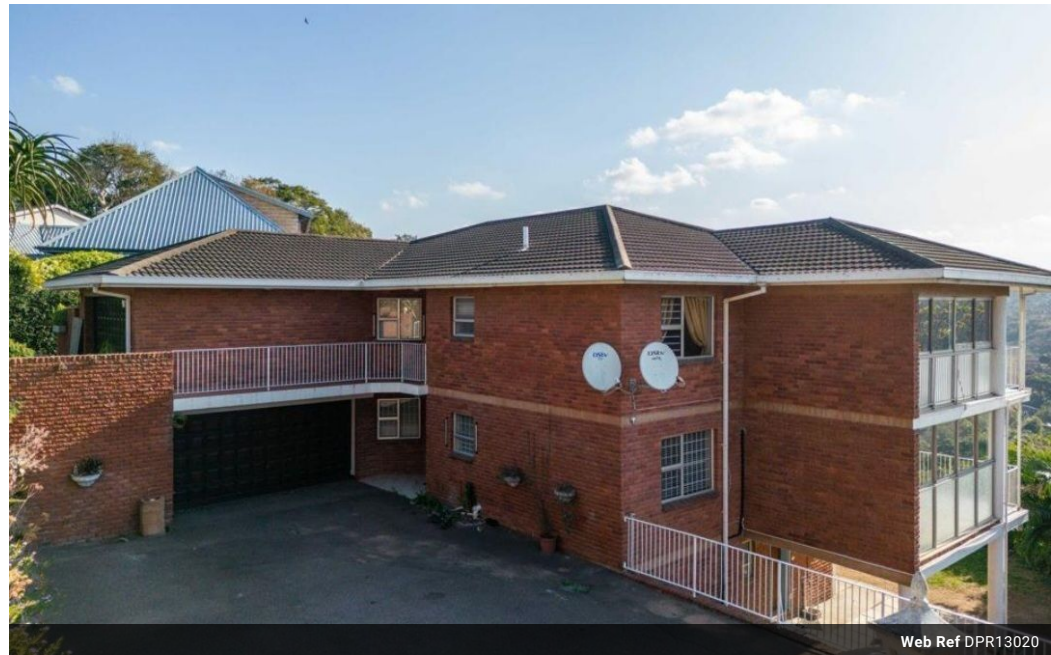
**Christy Du Preez**  
082 300 8532

christydupreez@dpg.co.za

Contact **Westville A-Team**

**031 2664343**

1 Knightbridge,  
16 Westville Road,  
Westville



Web Ref DPR13020



**R2,495,000**

🛏 3 🚿 2 🚗 2

**Monthly Bond Repayment** R24,909.58

Calculated over 20 years at 10.5% with no deposit.

**Transfer Costs** R115,461.00 **Bond Costs** R38,415.00

These calculations are only a guide. Please ask your conveyancer for exact calculations.

**Monthly Rates** R1,893

One of two facebrick units

Situated in the peaceful, central suburb of Westville, this stunning home offers not just a place to live, but a quality of life that is unparalleled.

Presenting a facebrick facade that blends beautifully with its surroundings, this property offers direct access to the unit from a double garage- providing both convenience and security. The hearty,spacious interiors reflect a dedication to comfort, creating a warm and welcoming atmosphere throughout.

The unit showcases three generously sized bedrooms with ample wardrobe space, matched with two bathrooms. An added bonus; the double domestic rooms could easily be converted into a separate flat, making this property a versatile investment.

The property comes standard with a beautiful view patio, creating an airy extension of your living space and offering a tranquil zone for...

## Features

**Pets Allowed** Yes

### Interior

Bedrooms	3
Bathrooms	2
Kitchens	1
Recep. Rooms	3
Furnished	Yes

### Exterior

Garages	2
Carports / Parkings	4
Security	Yes
Dom. Accom.	2
Pool	No
Views	True

### Sizes

Floor Size	232m²
------------	-------