



Anne Heyes
083 9635330
anneheyes@dpg.co.za

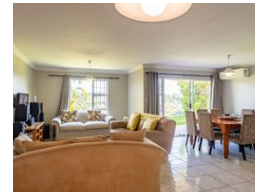
Contact Westville A-Team

031 2664343

1 Knightbridge,
16 Westville Road,
Westville



Web Ref DPR7745



R1,700,000

3 Bedrooms 2 Bathrooms 2 Garages

Monthly Bond Repayment R17,258.89

Calculated over 20 years at 10.75% with no deposit.

Transfer Costs R55,039.00 **Bond Costs** R30,875.00

These calculations are only a guide. Please ask your conveyancer for exact calculations.

Monthly Levy R1,700 **Monthly Rates** R1,697

Welcome to the heart of Westville, where convenience meets beauty.

Introducing Valley Vista, a rare gem that offers the perfect blend of location, space, and breathtaking views. Prepare to be amazed, as this spacious 160 sqm home is ready to sweep you off your feet. Step into the open plan living area, where the kitchen takes center stage. Equipped with stunning granite tops, ample cupboard space, and a scullery & laundry, this kitchen is a chef's dream come true. Host the most unforgettable gatherings as your living space seamlessly flows onto the outside patio, boasting exquisite views of the palmiet nature reserve. Get ready to witness Mother Nature at her finest, with abundant bird life and jaw-dropping sunsets just outside your door. When it's time to retreat, make your way to the three bedrooms and two bathrooms. The expansive master bedroom comes complete with a full ensuite bathroom,...

Features

| Interior | | Exterior | | Sizes | |
|--------------|----|---------------------|-------|------------|-------|
| Bedrooms | 3 | Garages | 2 | Floor Size | 160m² |
| Bathrooms | 2 | Carports / Parkings | 2 | | |
| Kitchens | 1 | Security | Yes | | |
| Recep. Rooms | 2 | Pool | No | | |
| Furnished | No | Views | False | | |