



Stacy Fernandez
069 354 3613
stacy.f@dpg.co.za

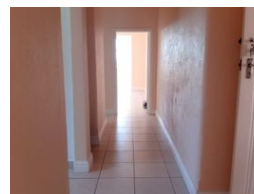
Contact Head Office - Dormehl
Lite

012 0000000

1170 Moulton Avenue
Waverley
0184



Web Ref DPR11718



R850,000

1 Bed 1.5 Bath 1 Garage

Monthly Bond Repayment R8,629.45

Calculated over 20 years at 10.75% with no deposit.

Transfer Costs R28,244.00 **Bond Costs** R21,450.00

These calculations are only a guide. Please ask your conveyancer for exact calculations.

Monthly Levy R2,000 **Monthly Rates** R500

Bright and spacious One bedroom apartment for Sale!

Dormehl Phalane property group offers you this stunning fully fitted one bedroom apartment on the top floor with fabulous views. This apartment comes with open plan lounge and dining area which is spacious and airy. The kitchen is fitted with some modern fittings and it has one family bathroom with separate guest toilet. It also has a prepaid meter with one lock up garage. Close to all amenities.

Features

Pets Allowed	Yes				
Interior		Exterior		Sizes	
Bedrooms	1	Garages	1	Floor Size	100m²
Bathrooms	1.5	Security	No		
Kitchens	1	Pool	No		
Recep. Rooms	2	Views	False		
Furnished	No				