



Stacy Fernandez
069 354 3613
stacy.f@dpg.co.za

Contact Head Office - Dormehl
Lite

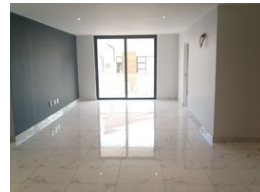
012 0000000

1170 Moulton Avenue
Waverley
0184

3 Bedroom Apartment For Sale in Windermere



Web Ref DPR14723



R3,350,000

3 3

Monthly Bond Repayment R34,010.17

Calculated over 20 years at 10.75% with no deposit.

Transfer Costs R203,047.00 **Bond Costs** R45,955.00

These calculations are only a guide. Please ask your conveyancer for exact calculations.

Monthly Levy R2,600 **Monthly Rates** R1,200

Luxurious 3 Bedroom Spacious Apartment For Sale

Dormehl Phalane Property Group offers you this luxurious 3 bedroom spacious brand new apartment.

All fittings are new this apartment is 124 squares its completely open plan lounge, modern kitchen and dining area with a balcony. Beautiful lighting right through the apartment it also has a outside store room/washing area. The main bedroom and second bedrooms have En-suit and walk in closet. One separate family bathroom comes with prepaid meter and 2 undercover parking bays. There is a communal gym, swimming pool and entertainment room for all functions for residents only with stunning roof top views of Durban and sea views. There is automated access 24 Hr security with a lift in the building. Close to all amenities.

Features

Interior

Bedrooms	3
Bathrooms	3
Kitchens	1
Recep. Rooms	2
Furnished	No

Exterior

Carports / Parkings	2
Security	Yes
Pool	Yes
Views	True

Sizes

Floor Size	124m²
------------	-------