

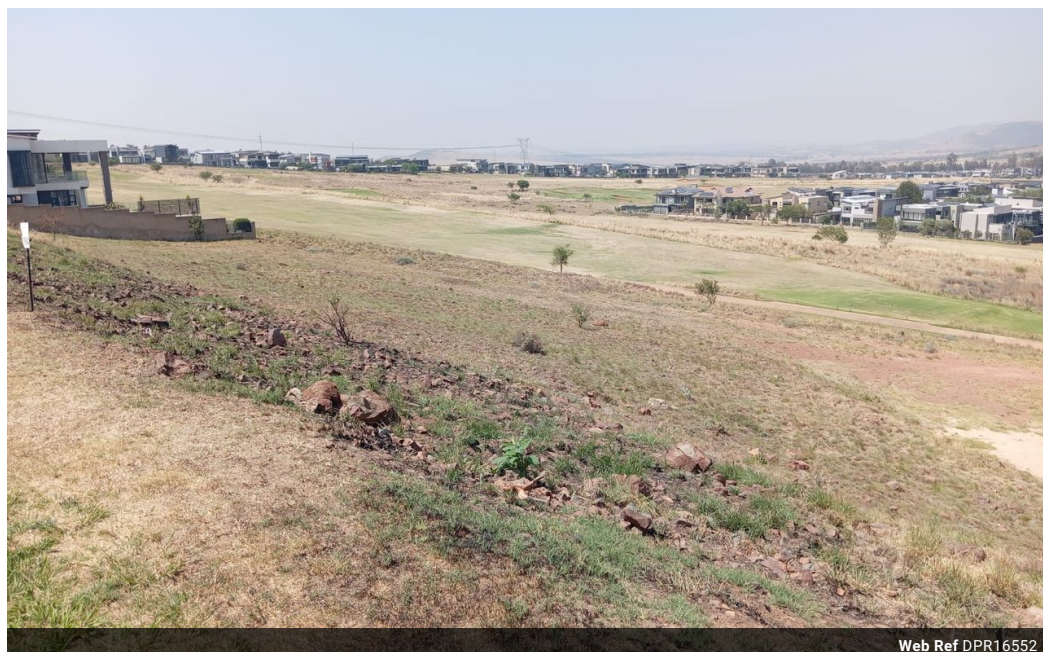


Patricia Bloem
0815281296
patriciab@dpg.co.za

Contact **Meyerton**

016 0042352

24 Glynn Street
Rothdene,
Meyerton,
1961



Web Ref DPR16552



R1,650,000

Monthly Bond Repayment R16,751.28

Calculated over 20 years at 10.75% with no deposit.

Transfer Costs R52,453.00 **Bond Costs** R30,875.00

These calculations are only a guide. Please ask your conveyancer for exact calculations.

Monthly Rates R2,500

Vacant stand in Eye of Africa.

Discover a prime vacant property in the sought-after Eye of Africa estate, perfectly situated for your next project. This stand boasts an ideal shape that allows for a creative home design tailored to your unique taste. With a little vision and planning, you can transform this space into the dream home you've always envisioned.

Before you start building, it's essential to conduct thorough research on reliable contractors, as a builder with an NHBRC certificate is highly recommended. Keep in mind that banks require a mandatory 40% deposit on vacant land, so be prepared for that investment. For more details or assistance, please don't hesitate to reach out!

Features