

4 Bedroom House For Sale in Beverley Hills



Enock Matla
071 040 7148
enockmatla@dpg.co.za

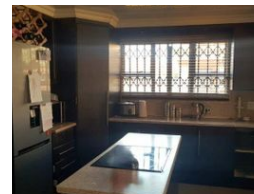
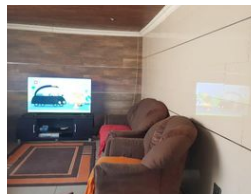
Contact Vanderbijlpark /
Sasolburg

016 4232876

Vision 21, Industrial Park,
Shop 26,
Steel Road,
Duncanville,
Vereeniging



Web Ref DPR11039



R995,000

4 2

Monthly Bond Repayment R10,101.53

Calculated over 20 years at 10.75% with no deposit.

Transfer Costs R30,412.00 **Bond Costs** R23,335.00

These calculations are only a guide. Please ask your conveyancer for exact calculations.

Monthly Rates R850

Spacious Four-Bedroom Home with Amenities!

This spacious four-bedroom home offers a comfortable and welcoming environment. The house is thoughtfully paved all the way around, providing easy access and enhancing its exterior appeal. A standout feature is the lapa outside, perfect for outdoor gatherings and relaxation. Additionally, a dedicated braai area allows you to enjoy grilling and outdoor dining in style.

Inside, the house boasts two well-appointed bathrooms, one of which is an ensuite to the master bedroom. The entire house is tastefully tiled, including the kitchen, sitting room, lounge, and both bathrooms. To enhance privacy and aesthetics, the bathroom windows are fitted with blinds. Convenience is further amplified by an additional toilet located outside. Whether you're hosting a barbecue in the lapa, enjoying a cozy evening indoors, or simply appreciating...

Features

Interior		Exterior		Sizes	
Bedrooms	4	Security	No	Land Size	271m²
Bathrooms	2	Pool	No		
Kitchens	1	Views	False		
Furnished	No				

