



Tumi Semakane
0659946098
tumi.s@dpg.co.za

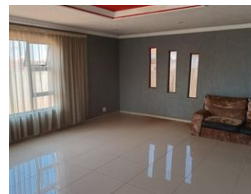
Contact **Vanderbijlpark / Sasolburg**

016 4232876

Vision 21, Industrial Park,
Shop 26,
Steel Road,
Duncanville,
Vereeniging



Web Ref DPR17040



R790,000

Monthly Bond Repayment R8,020.31
Calculated over 20 years at 10.75% with no deposit.

Transfer Costs R25,898.00 **Bond Costs** R19,565.00

These calculations are only a guide. Please ask your conveyancer for exact calculations.

Monthly Rates R600

🛏 3 🚿 2 🚗 1

Versatile Three-Bedroom Family Home !!!!!Bonus Two outside room

This charming three-bedroom home offers a comfortable and practical living space, perfect for families or individuals looking for convenience and potential. The main bedroom boasts an en-suite bathroom, providing privacy and comfort. The additional two bedrooms are well-sized and serviced by a second bathroom, catering to the needs of the household. The lounge area offers a cozy space for relaxation and entertainment, while the kitchen, though in need of some attention, provides an opportunity for customization to suit your personal taste and style.

Adding to its appeal, the property includes two outside rooms and an outside toilet, offering excellent income-generating potential or additional space for extended family. The garage ensures secure parking, while the property's location, conveniently close to Evaton Police...

Features

Pets Allowed	Yes		
Interior		Exterior	
Bedrooms	3	Garages	1
Bathrooms	2	Security	Yes
Kitchens	1	Dom. Accom.	2
Recep. Rooms	2	Pool	No
Furnished	No	Views	False
		Sizes	
		Land Size	387m²

