



Enock Matla
071 040 7148
enockmatla@dpg.co.za



Annah Matla
0792787157
annahmatla@dpg.co.za

Contact Vanderbijlpark /
Sasolburg

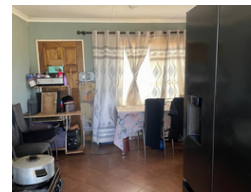
016 4232876

Vision 21, Industrial Park,
Shop 26,
Steel Road,
Duncanville,
Vereeniging

NEW



Web Ref DPR21411



R650,000

3 2

Monthly Bond Repayment R6,489.47
Calculated over 20 years at 10.5% with no deposit.

Transfer Costs R23,709.00 **Bond Costs** R17,680.00
These calculations are only a guide. Please ask your conveyancer for exact calculations.

Monthly Rates R890

Cozy Family Home With Flatlets

Welcome to this neat and cozy home that offers both comfort and versatility, making it a perfect choice for families or investors. Featuring 3 well-sized bedrooms and 2 bathrooms, this property provides ample space for everyday living. The main bedroom offers privacy and convenience, while the additional bedrooms are ideal for children, guests, or even a home office setup. The heart of the home is the open-plan kitchen and dining area, designed to create a warm and inviting atmosphere. Whether you are preparing family meals or entertaining guests, the layout allows for easy interaction and a natural flow into the lounge. The lounge itself is cozy yet spacious, providing the perfect space for relaxation and family time.

Parking is taken care of with a secure carport, adding to the practicality of this home. An additional...

Features

Pets Allowed	Yes				
Interior		Exterior		Sizes	
Bedrooms	3	Security	Yes	Land Size	424m²
Bathrooms	2	Pool	No		
Kitchens	1	Views	False		
Recep. Rooms	1				
Furnished	No				

