



**Enock Matla**  
071 040 7148  
enockmatla@dpg.co.za

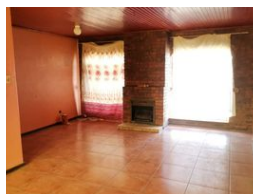
Contact Vanderbijlpark /  
Sasolburg

016 4232876

Vision 21, Industrial Park,  
Shop 26,  
Steel Road,  
Duncanville,  
Vereeniging



Web Ref DPR11791



## R650,000

3 2 2

**Monthly Bond Repayment** R6,489.47

Calculated over 20 years at 10.5% with no deposit.

**Transfer Costs** R23,709.00 **Bond Costs** R17,680.00

These calculations are only a guide. Please ask your conveyancer for exact calculations.

**Monthly Rates** R1,250

### Inviting Home with Modern Features!

Presenting this inviting 3-bedroom, 2-bathroom home, meticulously designed for modern living. Step into the welcoming kitchen, equipped with a stove and eye-level oven, perfect for culinary enthusiasts. The tiled floors throughout complement the contemporary aesthetic, while curtain rails offer versatility for personalizing the space. Entertain guests in the spacious dining room, or unwind in the comfortable lounge area. Parking is a breeze with two garages and a convenient carport, providing ample space for vehicles.

Security features including a security gate, burglar bars, and a fully fenced perimeter ensure peace of mind. Special lighting fixtures add a touch of elegance to the exterior, enhancing the curb appeal of this delightful property. With its blend of practicality and charm, this home offers a wonderful...

### Features

Interior		Exterior		Sizes	
Bedrooms	3	Garages	2	Land Size	517m <sup>2</sup>
Bathrooms	2	Carports / Parkings	1		
Kitchens	1	Security	No		
Recep. Rooms	2	Pool	No		
Furnished	No	Views	False		

