

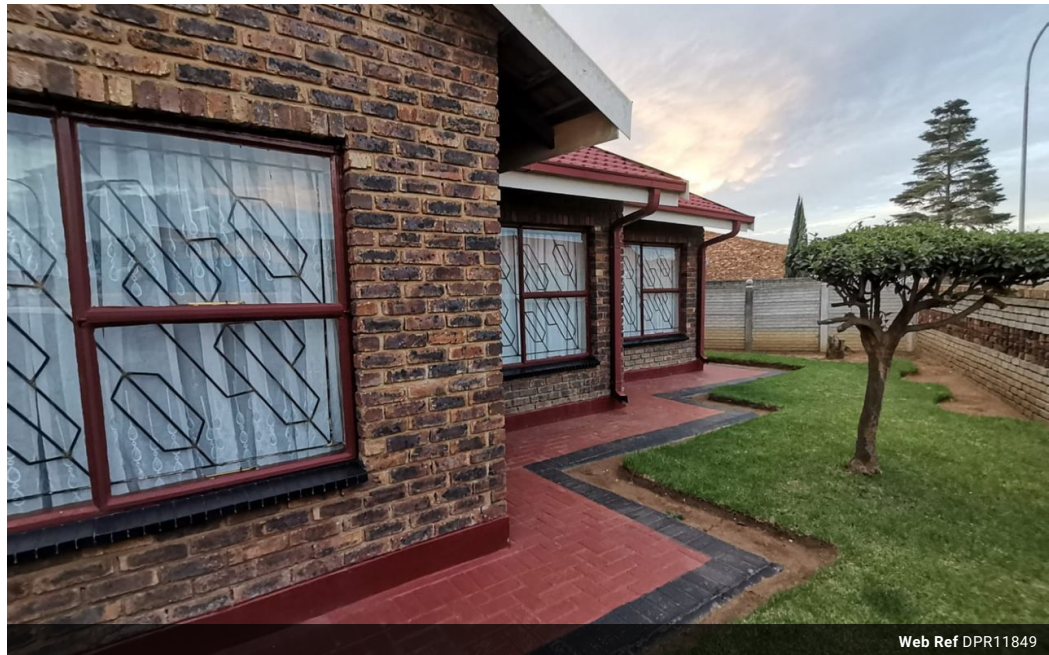


**Enock Matla**  
071 040 7148  
enockmatla@dpg.co.za

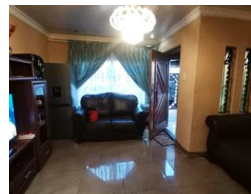
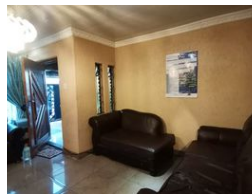
Contact Vanderbijlpark /  
Sasolburg

016 4232876

Vision 21, Industrial Park,  
Shop 26,  
Steel Road,  
Duncanville,  
Vereeniging



Web Ref DPR11849



**R790,000**

**Monthly Bond Repayment** R8,020.31  
Calculated over 20 years at 10.75% with no deposit.

**Transfer Costs** R25,898.00 **Bond Costs** R19,565.00

These calculations are only a guide. Please ask your conveyancer for exact calculations.

**Monthly Rates** R950

3 Bedrooms 2 Bathrooms 2 Carports / Parkings

Modern, Secure, Elegant Home Haven!

Welcome to this charming 3-bedroom, 2-bathroom home boasting modern amenities and stylish finishes throughout. The kitchen is a chef's dream, featuring eye-level oven, sleek granite countertops, and ample storage space. The dining room offers a perfect setting for entertaining guests or enjoying family meals. With a garage and carport, there's plenty of parking space for your vehicles.

Security is paramount with a security gate, burglar bars, and special doors ensuring peace of mind. The property is completely fenced and walled, providing privacy and security. Special lighting adds a touch of elegance to the ambiance. This home is the epitome of comfort, convenience, and security, offering a tranquil haven for its fortunate residents.

## Features

| Interior     |    | Exterior            |       | Sizes     |       |
|--------------|----|---------------------|-------|-----------|-------|
| Bedrooms     | 3  | Garages             | 2     | Land Size | 312m² |
| Bathrooms    | 2  | Carports / Parkings | 1     |           |       |
| Kitchens     | 1  | Security            | Yes   |           |       |
| Recep. Rooms | 2  | Pool                | No    |           |       |
| Furnished    | No | Views               | False |           |       |

