

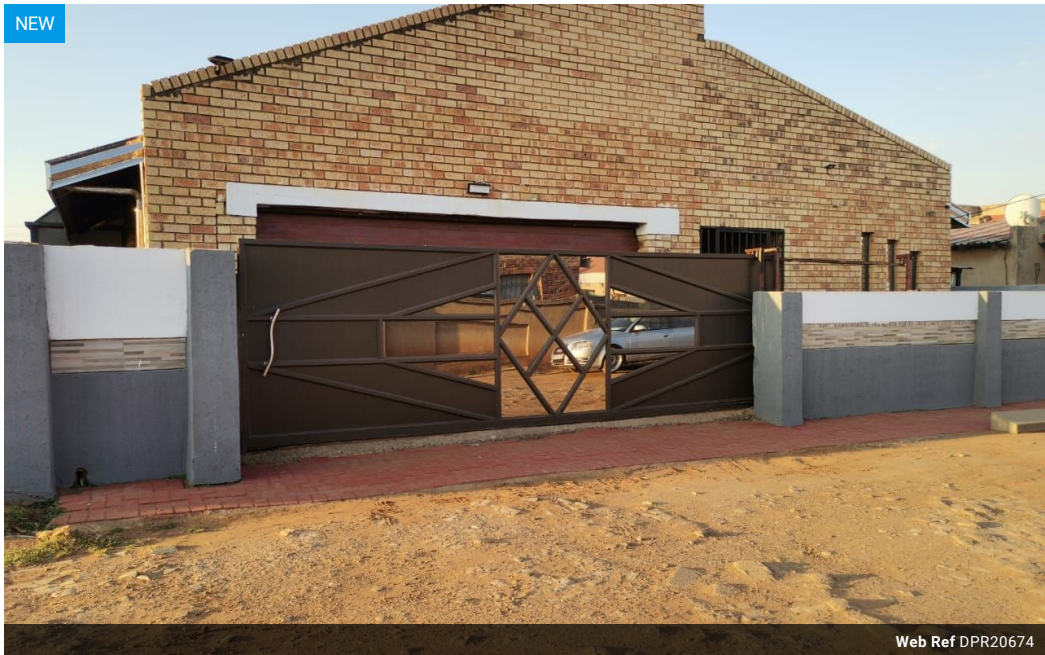


Enock Matla
071 040 7148
enockmatla@dpg.co.za

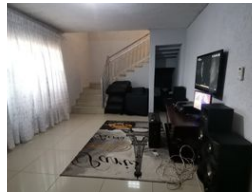
Contact Vanderbijlpark /
Sasolburg

016 4232876

Vision 21, Industrial Park,
Shop 26,
Steel Road,
Duncanville,
Vereeniging



Web Ref DPR20674



R1,015,000

3 2 2

Monthly Bond Repayment R10,304.57
Calculated over 20 years at 10.75% with no deposit.
Transfer Costs R32,749.00 **Bond Costs** R25,220.00
These calculations are only a guide. Please ask your conveyancer for exact calculations.
Monthly Rates R650

Spacious Family Home with Pool

Welcome to this charming and well-kept property that offers the perfect blend of comfort, functionality, and space—ideal for a family that loves to live and entertain! Boasting three generously sized bedrooms and two neatly tiled bathrooms, this home ensures everyone has their own private space. The kitchen is a true standout, featuring modern finishes, ample cupboard space, and a separate laundry area to keep things neat and organized. Step into the cozy lounge for relaxed evenings or enjoy quality time with loved ones in the spacious family room. A separate dining room sets the stage for memorable meals and celebrations. This home truly has room for it all!

Outside, you'll find a sparkling pool ready for summer fun, and a well-maintained yard perfect for kids and pets. With two garages and three carports, there's more than...

Features

Pets Allowed	Yes		
Interior		Exterior	
Bedrooms	3	Garages	2
Bathrooms	2	Carports / Parkings	3
Kitchens	1	Security	Yes
Recep. Rooms	3	Pool	Yes
Furnished	No	Views	False

