



**Enock Matla**  
071 040 7148  
enockmatla@dpg.co.za

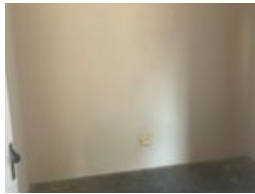
Contact **Vanderbijlpark / Sasolburg**

**016 4232876**

Vision 21, Industrial Park,  
Shop 26,  
Steel Road,  
Duncanville,  
Vereeniging



Web Ref DPR20675



**R470,000**

2 1

**Monthly Bond Repayment** R4,771.58  
Calculated over 20 years at 10.75% with no deposit.  
**Transfer Costs** R19,049.00    **Bond Costs** R13,910.00  
These calculations are only a guide. Please ask your conveyancer for exact calculations.  
**Monthly Rates** R800

Neat and Simple Living Space

Step into this cozy and well-loved home that's full of warmth and charm! Perfect for first-time buyers, small families, or anyone looking to downsize, this neat property offers easy, comfortable living without the fuss. It features two well-sized bedrooms with plenty of natural light, and a clean, functional bathroom that meets all your daily needs.

The heart of the home is the open-plan kitchen and lounge area—a welcoming space where you can cook, relax, and enjoy time with friends or family. The layout is simple yet practical, making the most of every square meter and creating a homely atmosphere that instantly makes you feel at ease. Whether you're looking for a place to call your own or just want something low-maintenance and affordable, this home is a great fit. Tucked away in a quiet neighborhood, it's the kind of spot...

Features

<b>Pets Allowed</b>		Yes			
<b>Interior</b>		<b>Exterior</b>		<b>Sizes</b>	
Bedrooms	2	Security	Yes	Land Size	213m²
Bathrooms	1	Pool	No		
Kitchens	1	Views	False		
Recep. Rooms	1				
Furnished	No				