



**Annah Matla**  
0792787157  
annahmatla@dpg.co.za



**Enock Matla**  
071 040 7148  
enockmatla@dpg.co.za

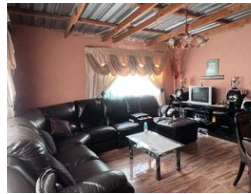
Contact Vanderbijlpark /  
Sasolburg

016 4232876

Vision 21, Industrial Park,  
Shop 26,  
Steel Road,  
Duncanville,  
Vereeniging



Web Ref DPR21191



**R440,000**

3 1 1

**Monthly Bond Repayment** R4,392.87

Calculated over 20 years at 10.5% with no deposit.

**Transfer Costs** R17,984.00 **Bond Costs** R12,935.00

These calculations are only a guide. Please ask your conveyancer for exact calculations.

**Monthly Rates** R700

## Cozy Neat Home with Flatlet

This neat and well-maintained property offers comfort, warmth, and practicality, making it a wonderful place to call home. The main house features three comfortable bedrooms, each with a welcoming atmosphere that creates a true sense of coziness. A tidy bathroom serves the household, while the inviting lounge and dining room provide the perfect setting for relaxed family living and shared meals. The kitchen is practical and well laid out, with ample cupboard space and a convenient adjoining laundry area for everyday ease.

For added convenience, the property includes a garage that provides secure parking and useful storage space. A separate flatlet is also included, offering additional accommodation for extended family or visiting guests. This setup is ideal for those who enjoy close-knit living while still having privacy and...

## Features

Pets Allowed		Yes			
Interior		Exterior		Sizes	
Bedrooms	3	Garages	1	Land Size	243m²
Bathrooms	1	Security	Yes		
Kitchens	1	Dom. Accom.	1		
Recep. Rooms	2	Pool	No		
Furnished	No	Views	False		

