



**Byron Pillay**  
072 593 7447  
byron.pillay@dpg.co.za



**Kyle De Aguiar**  
Candidate Property  
Practitioner  
Registered with PPRA  
(FFC 118 969 8)  
072 137 4699  
kyled@dpg.co.za

Contact DPG Albertyon/JHB  
South

011 5539200

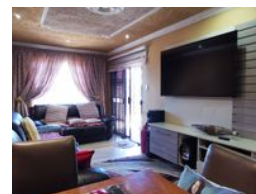
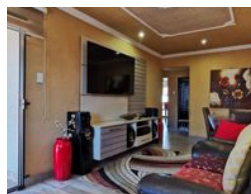
95 Victoria Street,  
Oakdene,  
Johannesburg,  
Gauteng,  
2190

## FEATURED



SOLE MANDATE

Web Ref DPR12142



## R650,000

**Monthly Bond Repayment** R6,598.99  
Calculated over 20 years at 10.75% with no deposit.

**Transfer Costs** R23,730.00 **Bond Costs** R17,680.00

These calculations are only a guide. Please ask your conveyancer for exact calculations.

🛏 2 🚿 1 🏠 1

## 2 BEDROOM- 1 BATH - FAMILY HOME SITUATED IN THE HEART OF STRETTFORD, ORANGE FARM

Introducing a captivating freestanding family home boasting contemporary finishes and nestled in the heart of Orange Farm. Situated on a generous 207m2 stand, this property offers both style and functionality, making it an ideal haven for you and your loved ones.

Upon arrival, you are greeted by a secure lockable garage, providing ample space for your vehicle and ensuring peace of mind with walls encompassing the entire property. Adding an extra layer of protection, a convenient carport offers additional shelter for vehicles parked outside, perfect for safeguarding your prized possessions.

Security is paramount, with burglar proofing installed on all windows and entry and exit points, ensuring a secure environment for your family.

Step inside to discover a spacious lounge area, ideal for relaxation and entertaining guests,...

## Features

Pets Allowed		Yes	
Interior		Exterior	
Bedrooms	2	Garages	1
Bathrooms	1	Carports / Parkings	1
Kitchens	1	Security	No
Recep. Rooms	2	Pool	No
Furnished	No	Views	False
		Sizes	
		Land Size	207m²

