



Tumi Semakane
0659946098
tumi.s@dpg.co.za

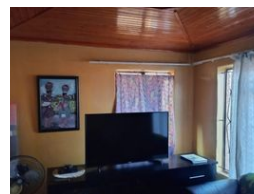
Contact Vanderbijlpark /
Sasolburg

016 4232876

Vision 21, Industrial Park,
Shop 26,
Steel Road,
Duncanville,
Vereeniging



Web Ref DPR16090



R484,000

2 2 1

Monthly Bond Repayment R4,913.71

Calculated over 20 years at 10.75% with no deposit.

Transfer Costs R19,049.00 **Bond Costs** R13,910.00

These calculations are only a guide. Please ask your conveyancer for exact calculations.

Monthly Rates R400

Cozy Home with Dual Flatlets

Discover this charming and cozy home, perfect for those seeking comfort and versatility. With 2 well-sized bedrooms and 2 bathrooms, this property offers a practical yet welcoming living space, ideal for small families or couples. The inviting lounge area is perfect for relaxation, and the kitchen is well-equipped to handle all your culinary needs. Every room has been thoughtfully designed to create a warm and comfortable atmosphere, making it a lovely place to call home.

Adding to its appeal, this property includes two separate flatlets, providing excellent flexibility. These flatlets are perfect for guests, extended family, or even as potential rental units for additional income. The layout allows for privacy between the main home and flatlets, enhancing the property's usability and investment potential. With its cozy feel...

Features

Pets Allowed	Yes				
Interior		Exterior		Sizes	
Bedrooms	2	Garages	1	Land Size	234m²
Bathrooms	2	Security	Yes		
Kitchens	1	Pool	No		
Recep. Rooms	1	Views	False		
Furnished	No				

