

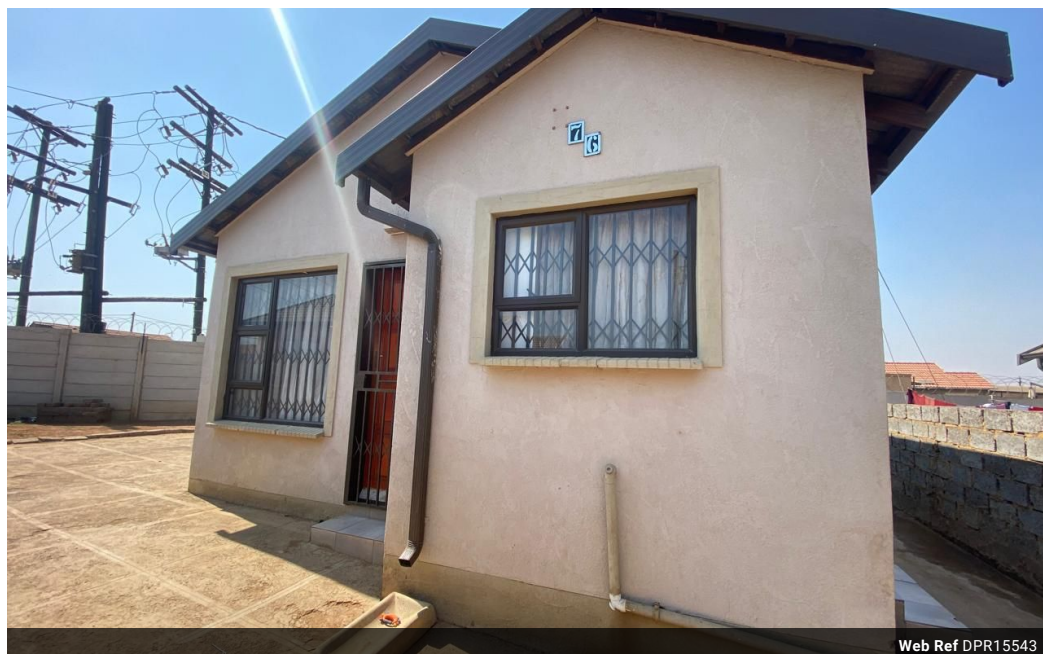


Erica Nosenga
0737756702
ericanosenga@dpg.co.za

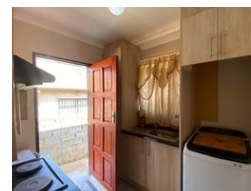
Contact Vanderbijlpark /
Sasolburg

016 4232876

Vision 21, Industrial Park,
Shop 26,
Steel Road,
Duncanville,
Vereeniging



Web Ref DPR15543



R480,000

2 1

Monthly Bond Repayment R4,873.10

Calculated over 20 years at 10.75% with no deposit.

Transfer Costs R19,049.00 **Bond Costs** R13,910.00

These calculations are only a guide. Please ask your conveyancer for exact calculations.

Monthly Rates R660

Perfect Start: Affordable First Home

Are you a small family ready to embark on a new chapter? This delightful two-bedroom house could be the perfect start to your journey. Nestled in a serene and secure neighborhood, this home offers a blend of comfort and convenience that is hard to beat. Located in close proximity to the Golden Highway, this property provides easy access to a variety of amenities, including the bustling Evaton Mall. This accessibility not only simplifies daily errands but also ensures that public transport options are readily available, making commuting a breeze.

The house is attractively priced, offering excellent value for your investment. For first-time home buyers, the Government offers subsidies through the First Home Finance (FHF) program. These subsidies can be used towards your deposit, covering any shortfall, or even for conveyancing...

Features

Pets Allowed	Yes				
Interior		Exterior		Sizes	
Bedrooms	2	Security	Yes	Land Size	270m²
Bathrooms	1	Pool	No		
Kitchens	1	Views	False		
Recep. Rooms	1				
Furnished	No				

