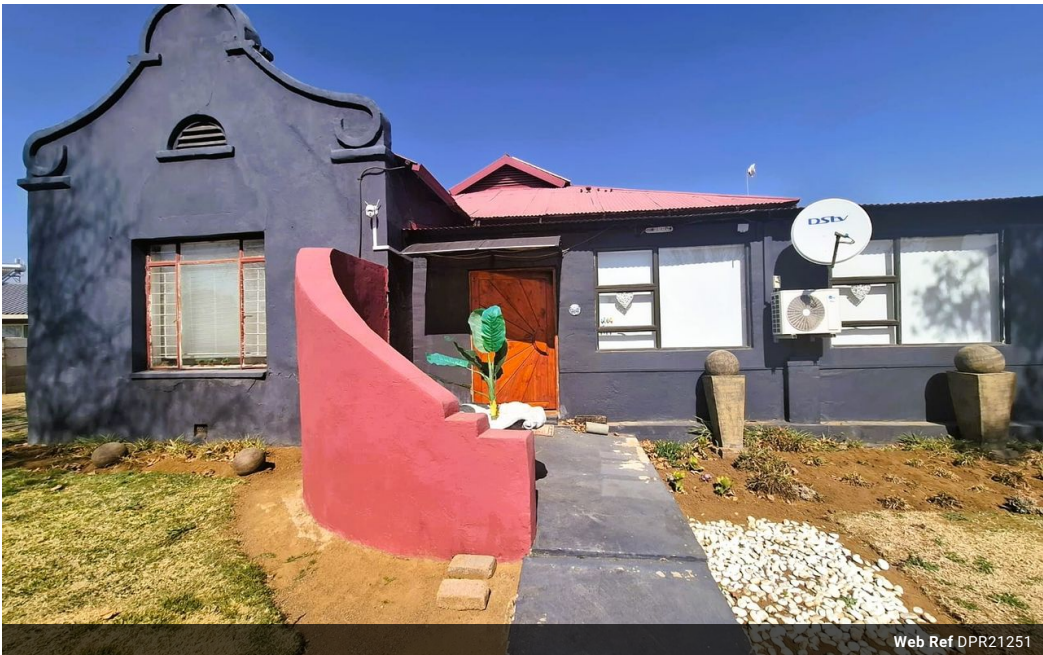




Estelle Spies
0734037057
estellespies@dpg.co.za

Contact Heidelberg
016 4232876
Vision 21 Industrial Park
Shop 26
Steel Road
Duncanville
Vereeniging



Web Ref DPR21251



R3,400,000

5 3 8

Monthly Bond Repayment R33,944.92
Calculated over 20 years at 10.5% with no deposit.
Transfer Costs R208,688.00 **Bond Costs** R45,955.00
These calculations are only a guide. Please ask your conveyancer for exact calculations.
Monthly Rates R1,500

Beautifully Maintained 4 Bedroom Family Home!

This exceptional property offers the perfect blend of modern living, comfort, and practicality, making it an ideal home for a family that values both space and security. Featuring four generously sized bedrooms and three and a half bathrooms, this residence is designed to accommodate the needs of a growing household with ease. The open-plan lounge and dining room create a welcoming atmosphere, seamlessly flowing into a well-appointed kitchen that is both functional and stylish. For those who enjoy entertaining, the home boasts a built-in braai and a dedicated entertainment area, perfect for gatherings with family and friends. The property further impresses with its four garages and ample space for up to eight additional parking bays, ensuring convenience for residents and guests alike.

Sustainability and self-sufficiency are...

Features

Pets Allowed		Yes		
Interior		Exterior		Sizes
Bedrooms	5	Garages	8	Land Size
Bathrooms	3	Security	Yes	1,487m²
Kitchens	1	Pool	No	
Recep. Rooms	2	Views	False	
Studies	1			
Furnished	No			

