

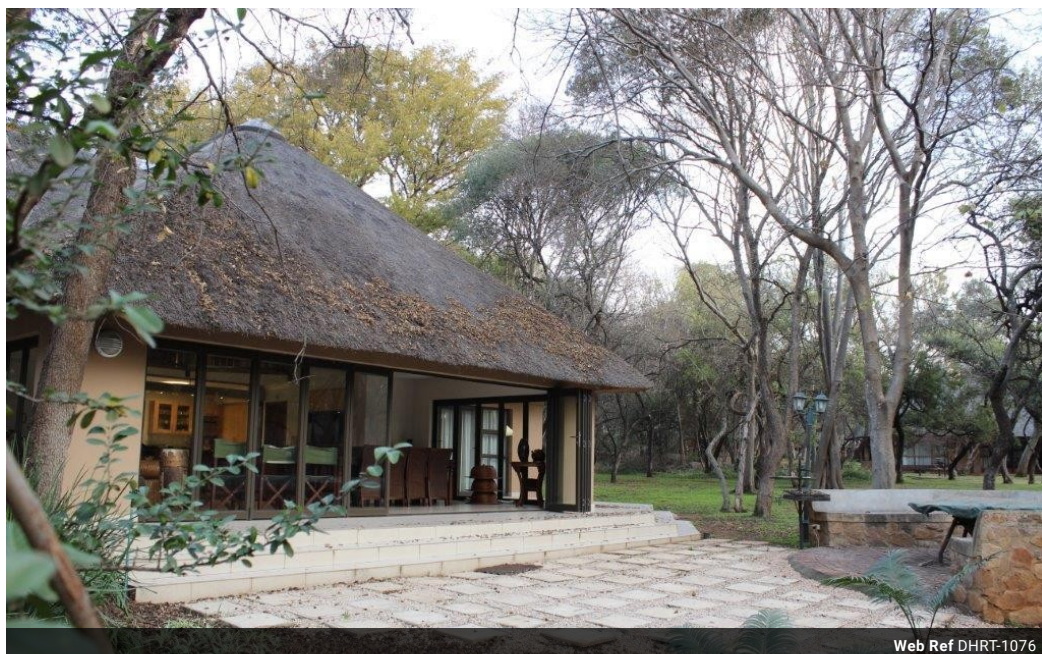


Peta-Ann Stevens
082 894 6097
petas@dpg.co.za

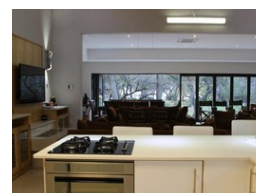
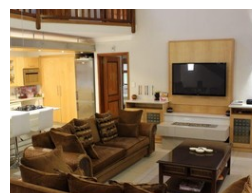
Contact Hartbeespoort

082 8946097

148 Road 2,
Lakeland Estate,
Hartbeespoort



Web Ref DHRT-1076



R3,400,000

4 Bedrooms 3 Bathrooms 2 Garages

Monthly Bond Repayment R33,944.92

Calculated over 20 years at 10.5% with no deposit.

Transfer Costs R208,688.00 **Bond Costs** R45,955.00

These calculations are only a guide. Please ask your conveyancer for exact calculations.

Monthly Levy R4,500 **Monthly Rates** R615 **Special Levy** R570

Serious about living?

Watch the family embark from a water sport experience from your open spacious patio.

The latest luxury features, lighting and furnishings throughout. Spacious lounge, dining room and gourmet kitchen on the lower level, the main bedroom (mes) as well as the two bedroom guest suite are positioned on either side of the lounge. The TV lounge and main guest suite are on the upper level. Enjoy quiet family evenings around your own private braai area. Enjoy game roaming around your lovely bushveld home and be spoilt by the wonderful services this Estate has to offer all owners.

Your boating toys are housed at the back of the Estate in your own private boat locker. Enjoy the Lakeland facilities at the club house, tennis courts and childrens playground while the boating crew take care of your boat after hour. Meet your fellow...

Features

Pets Allowed		Yes		
Interior			Exterior	
Bedrooms	4		Garages	2
Bathrooms	3		Security	Yes
Kitchens	1		Pool	Yes
Recep. Rooms	3		Views	True
Furnished	No			
			Sizes	
			Floor Size	276m²

