

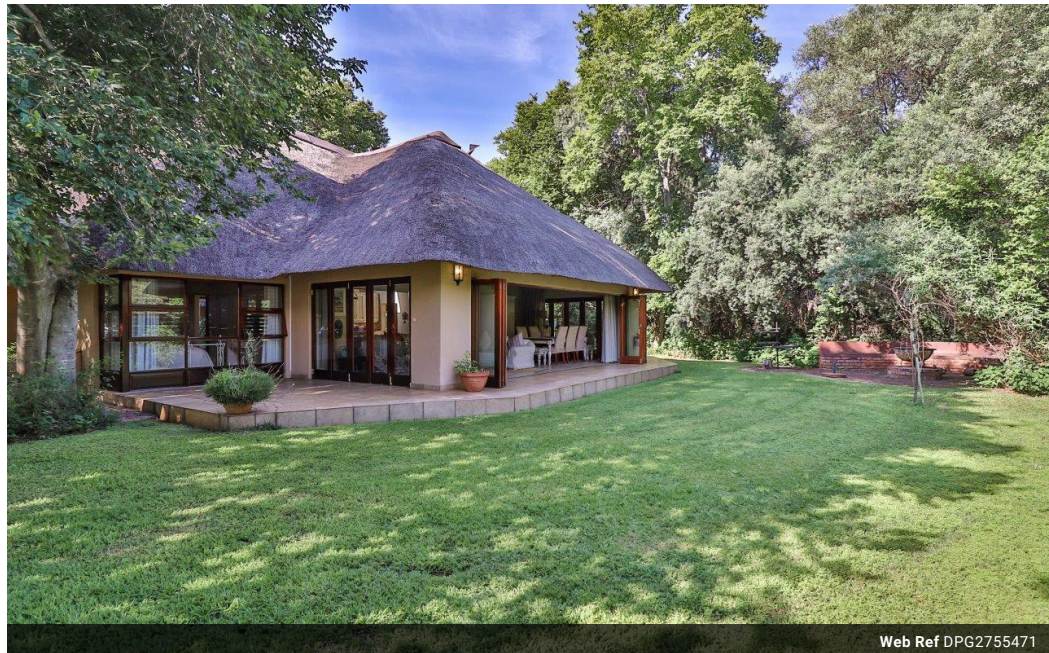


**Peta-Ann Stevens**  
082 894 6097  
petas@dpg.co.za

Contact Hartbeespoort

082 8946097

148 Road 2,  
Lakeland Estate,  
Hartbeespoort



Web Ref DPG2755471



**R3,200,000**

4 Bedrooms 3 Bathrooms 2 Kitchens

**Monthly Bond Repayment** R31,948.16

Calculated over 20 years at 10.5% with no deposit.

**Transfer Costs** R184,520.00 **Bond Costs** R44,070.00

These calculations are only a guide. Please ask your conveyancer for exact calculations.

**Monthly Levy** R4,500 **Monthly Rates** R615

## Luxury at Hartbeespoort Dam

Generous and luxurious holiday home!

This luxurious bushveld home is welcoming and soothing to the senses. With every bit of furniture and decor in just the right places, all you must do is bring the family and set the scene. Family fun and enjoyment is yours to enjoy.

Lakeland is one of the original secure developments along the Southern Shores of Hartbeespoort Dam. Purposefully developed to be your home-away-from-home, Lakeland was started in the early 90's and its popularity as a luxurious weekend break-away from the city has remained stable through-out the years. With the major changes and development creeping up from the Jozi Northern Suburbs into the Lanseria area, this home-away-from-home scenario is soon to change into one of the most popular destinations for permanent living, as a mere 20 minutes' drive gets you...

## Features

Pets Allowed		Yes	
Interior		Exterior	
Bedrooms	4	Garages	2
Bathrooms	3	Security	Yes
Kitchens	1	Pool	Yes
Recep. Rooms	2	Views	False
Furnished	No		
Sizes		Floor Size	
		292m²	

