

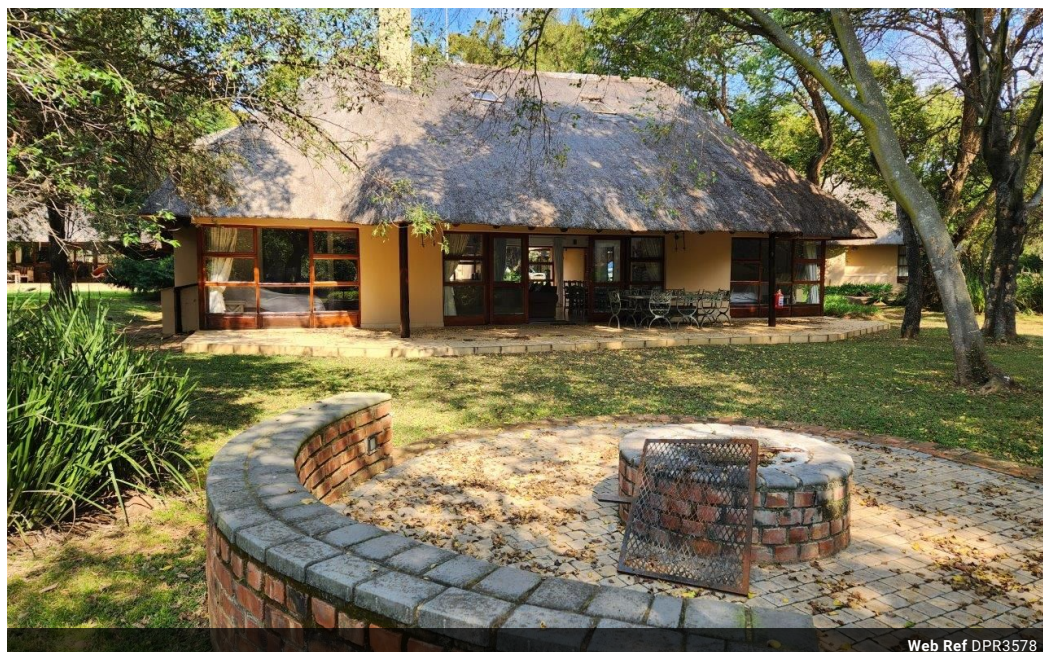


Peta-Ann Stevens
082 894 6097
petas@dpg.co.za

Contact Hartbeespoort

082 8946097

148 Road 2,
Lakeland Estate,
Hartbeespoort



Web Ref DPR3578



R1,950,000

🛏 4 🚿 2 🚗 2

Monthly Bond Repayment R19,796.96

Calculated over 20 years at 10.75% with no deposit.

Transfer Costs R72,206.00 **Bond Costs** R32,760.00

These calculations are only a guide. Please ask your conveyancer for exact calculations.

Monthly Levy R5,500 **Monthly Rates** R615

Revamped and ready!

Enter to a spacious and light lounge, dining area with open plan revamped kitchen.

Large sliding doors lead to the front veranda and spacious garden, with a built in boma/braai area.

This home offers 4 bedrooms, 2 with lofts for extra space that may be needed. 2 bedrooms share one side of the home with another two bedrooms positioned on the opposite side, both sides sharing a revamped bathroom positioned between them. The home lets you have those large family gatherings without leaving you feeling cramped for space. With the sleeping lofts above the third and fourth bedroom to take care of little visitors who may like to share your wonderful space in this very sought after bushveld environment.

Take a slow walk down the cobbled road to the waterfront. Here you will find the best boating facilities on the Dam. The boating...

Features

Pets Allowed Yes

Interior

Bedrooms	4
Bathrooms	2
Kitchens	1
Recep. Rooms	2
Furnished	Yes

Exterior

Garages	2
Security	Yes
Pool	Yes
Views	True

Sizes

Floor Size	300m ²
------------	-------------------

Extras

24 Hour Access 24 Hour Response Boat Launch Wildlife Estate

