



Peta-Ann Stevens
082 894 6097
petas@dpg.co.za

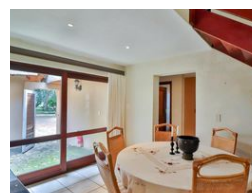
Contact Hartbeespoort

082 8946097

148 Road 2,
Lakeland Estate,
Hartbeespoort



Web Ref DPR4933



R1,950,000

🛏 7 🚿 4.5 🚗 2

Monthly Bond Repayment R19,796.96

Calculated over 20 years at 10.75% with no deposit.

Transfer Costs R72,206.00 **Bond Costs** R32,760.00

These calculations are only a guide. Please ask your conveyancer for exact calculations.

Monthly Levy R5,500 **Monthly Rates** R615

A dream holiday home for the large family!

If you have a big family then this is the home for you.

With a whopping 7 bedrooms and 4.5 bathrooms, this incredible home is definitely a gem of the bushveld. Nestled in the beautiful Lakeland Estate in Hartbeespoort Dam, this home also includes an open plan lounge, dining and kitchen, with an extended patio onto a big garden, complete with a boma and views of the famous Hartbeespoort Dam.

A bird watchers dream location, this home is available immediately. The estate has a clubhouse, restaurant, tennis courts, jungle gym and swimming pool, as well as a harbour and slipway.

You don't have to drive or fly long distances to get to your destination. Hartbeespoort is only 45 minutes north of Johannesburg, 35 minutes west of Pretoria and 40 minutes east of Rustenburg. This is a centrally located holiday destination to explore...

Features

Pets Allowed Yes

Interior

Bedrooms	7
Bathrooms	4.5
Kitchens	1
Recep. Rooms	2
Furnished	No

Exterior

Garages	2
Security	Yes
Pool	Yes
Views	True

Sizes

Floor Size	300m ²
------------	-------------------

Extras

24 Hour Access 24 Hour Response Aquatic Activities Boat Launch Boathouse Covered Patio
Holiday Home Nature Reserve Lifestyle Security Estate

