



Adelaide Ngwenya
0682207670
adelaidengwenya@dpg.co.za

Contact Heidelberg

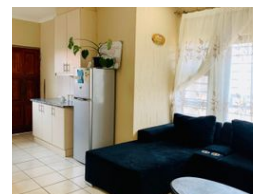
016 4232876

Vision 21 Industrial Park
Shop 26
Steel Road
Duncanville
Vereeniging



BANK ASSISTED, SOLE MANDATE

Web Ref DPR19922



R695,000

2 2 1

Monthly Bond Repayment R7,055.84

Calculated over 20 years at 10.75% with no deposit.

Transfer Costs R23,730.00 **Bond Costs** R17,680.00

These calculations are only a guide. Please ask your conveyancer for exact calculations.

Monthly Rates R1,700

Neat 2 Bedroom Tuscan Style Home!

EXCLUSIVE SOLE MANDATE! This immaculate 2-bedroom, 2-bathroom home offers comfort, style, and convenience in one neat package. Built in the classic Tuscan style, this house is ideal for small families, couples, or anyone looking to downsize without giving up quality. The home is fully tiled and very well maintained. The kitchen features granite countertops and built-in cupboards, offering a modern and practical cooking space. Both bedrooms are average in size and include built-in cupboards for your convenience. The two bathrooms are clean and functional—perfect for comfortable everyday living.

A unique feature of this property is the garage with two doors—one in the front and one at the back, allowing drive-through access and extra ease when parking or moving items. Location is a big plus. The property is close to the N3...

Features

Pets Allowed	Yes				
Interior		Exterior		Sizes	
Bedrooms	2	Garages	1	Land Size	299m²
Bathrooms	2	Security	Yes		
Kitchens	1	Pool	No		
Recep. Rooms	1	Views	False		
Furnished	No				