

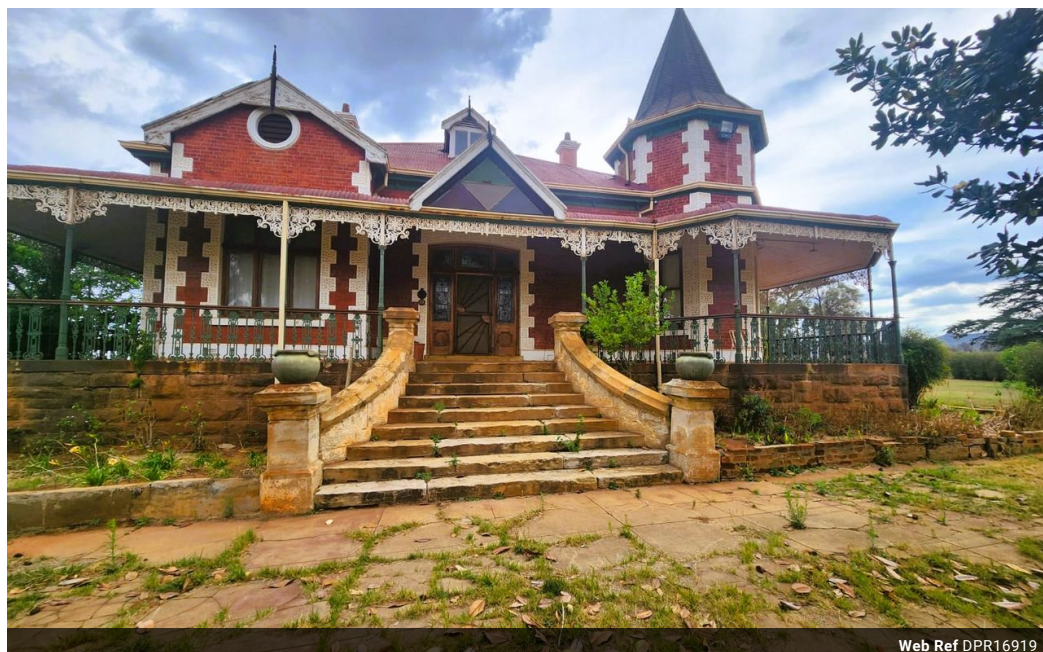


Charline Van der Walt
0760568279
charlinevdwalt@dpg.co.za

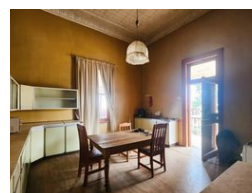
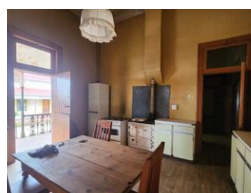
Contact Heidelberg

016 4232876

Vision 21 Industrial Park
Shop 26
Steel Road
Duncanville
Vereeniging



Web Ref DPR16919



R9,800,000

4 1

Monthly Bond Repayment R99,492.44

Calculated over 20 years at 10.75% with no deposit.

Transfer Costs R958,676.00 **Bond Costs** R84,785.00

These calculations are only a guide. Please ask your conveyancer for exact calculations.

Monthly Rates R4,500

Discover A Historic Victorian Gem from 1906

Step into the timeless elegance of the De Rust Victorian Mansion, an architectural marvel meticulously constructed in the early 20th century. Nestled amidst the scenic backdrop of the Suikerbosrand Nature Reserve, this grand estate encapsulates heritage, charm, and versatility. Every detail tells a story—from the intricate pressed-steel ceilings and imported Italian mosaic tiles to the rosewood fireplaces and lead-glass windows. The main dwelling boasts an expansive T-shaped corridor leading to various sections, including luxurious lounges, guest quarters, and a breakfast room warmed by its own fireplace. The wraparound veranda, adorned with Brooky lace and cast-iron trellis, frames the house beautifully.

This 12-bedroom property, complemented by 11 bathrooms, extends its charm through family quarters, stables, and multiple...

Features

Pets Allowed	Yes				
Interior		Exterior		Sizes	
Bedrooms	4	Carports / Parkings	6	Land Size	25,725m²
Bathrooms	1	Security	Yes		
Kitchens	1	Dom. Accom.	1		
Recep. Rooms	2	Pool	No		
Studies	1	Views	False		
Furnished	No				
Extras					
Stables					