



**Adelaide Ngwenya**  
0682207670  
adelaidengwenya@dpg.co.za

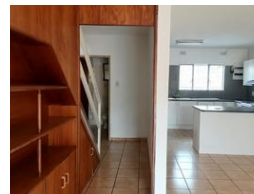
Contact Heidelberg

016 4232876

Vision 21 Industrial Park  
Shop 26  
Steel Road  
Duncanville  
Vereeniging



Web Ref DPR11751



## R750,000

3 2

**Monthly Bond Repayment** R7,614.22

Calculated over 20 years at 10.75% with no deposit.

**Transfer Costs** R25,898.00 **Bond Costs** R19,565.00

These calculations are only a guide. Please ask your conveyancer for exact calculations.

**Monthly Levy** R3,018 **Monthly Rates** R1,800

### Ideal Flat in Secure Complex!

Step into this newly listed, face brick, duplex flat in the heart of Heidelberg. Nestled within a serene and secure complex, this residence offers not just a home but a lifestyle marked by peace and tranquility. As you enter, the well-kept, open-plan interior welcomes you, showcasing a harmonious blend of a modern kitchen, a spacious dining area, a comfortable lounge, and a convenient guest bathroom. The communal facilities within the complex add a touch of luxury to your everyday life, with a stunning communal pool and garden providing the perfect backdrop for relaxation and socializing.

Venture upstairs to discover three generously sized bedrooms, each equipped with built-in cupboards to cater to your storage needs. A full bathroom serves these bedrooms, while the main bedroom boasts an en-suite bathroom for added...

### Features

Interior		Exterior		Sizes	
Bedrooms	3	Carports / Parkings	1	Land Size	118m²
Bathrooms	2	Security	Yes		
Kitchens	1	Pool	Yes		
Recep. Rooms	2	Views	False		
Furnished	No				