

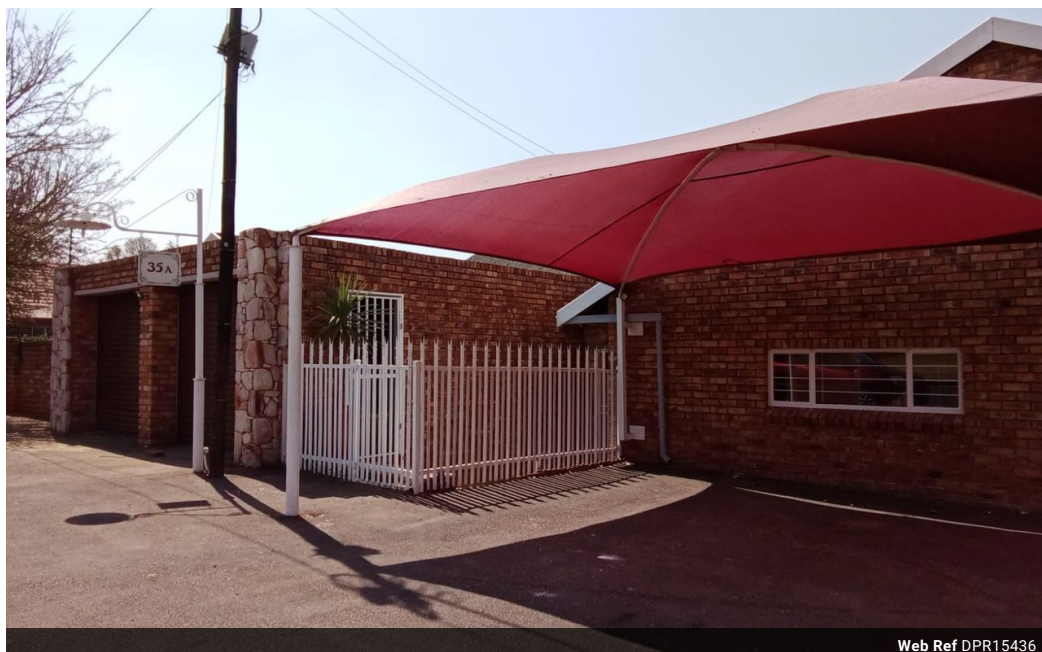


**Adelaide Ngwenya**  
0682207670  
adelaidengwenya@dpg.co.za

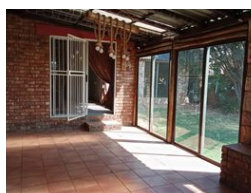
Contact Heidelberg

016 4232876

Vision 21 Industrial Park  
Shop 26  
Steel Road  
Duncanville  
Vereeniging



Web Ref DPR15436



**R1,900,000**

5 3 2

**Monthly Bond Repayment** R19,289.35

Calculated over 20 years at 10.75% with no deposit.

**Transfer Costs** R69,206.00 **Bond Costs** R32,760.00

These calculations are only a guide. Please ask your conveyancer for exact calculations.

**Monthly Rates** R3,000

**Beautiful, Secure Home Ideally Situated!**

Nestled in a secure, boomed area with 24-hour security at the gate, this spacious 5-bedroom home offers both comfort and convenience. Of the five bedrooms, four are equipped with ceiling fans to keep you cool during warm days. The property boasts three well-appointed bathrooms, two of which are en-suite, providing privacy and luxury. These en-suite bedrooms are currently used as flatlets, each with its own entrance, prepaid electricity, and a private garden—ideal for rental income or extended family living.

The heart of the home features an open-plan lounge, dining, and kitchen area, perfect for family gatherings and entertaining guests.

The kitchen is fitted with built-in cupboards, a gas stove with four plates, and an electric oven, making meal preparation a breeze. A scullery with a dishwasher and toploader connection...

## Features

Pets Allowed		Yes			
Interior				Exterior	
Bedrooms	5			Garages	2
Bathrooms	3			Carports / Parkings	2
Kitchens	1			Security	Yes
Recep. Rooms	2			Dom. Accom.	1
Furnished	No			Pool	Yes
				Views	True
				Sizes	
				Land Size	767m²