



Adelaide Ngwenya
0682207670
adelaidengwenya@dpg.co.za

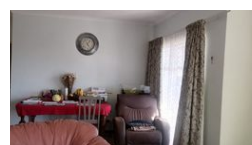
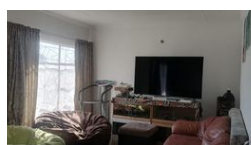
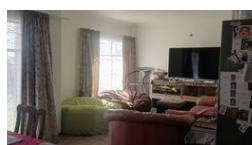
Contact Heidelberg

016 4232876

Vision 21 Industrial Park
Shop 26
Steel Road
Duncanville
Vereeniging



Web Ref DPR13595



R950,000

3 2 1

Monthly Bond Repayment R9,644.68

Calculated over 20 years at 10.75% with no deposit.

Transfer Costs R30,412.00 **Bond Costs** R23,335.00

These calculations are only a guide. Please ask your conveyancer for exact calculations.

Monthly Levy R1 **Monthly Rates** R1,800 **Special Levy** R1

A 3 Bedroom House With Flatlet!

This home is perfectly suited for all families, it offers both comfort and convenience, being within walking distance of a primary school and close to various amenities. The well-maintained property features an open-plan lounge and dining area filled with natural light, leading to a patio with double glass doors overlooking the pool area. An additional lounge can serve as an extra living space, study, or office. The spacious kitchen is equipped with built-in cupboards. The home includes three bedrooms, all with built-in cupboards, a bathroom, and a separate toilet.

The exterior is equally impressive, boasting a lovely garden and a Lapa that faces the pool—ideal for entertaining on hot summer days. Another patio, currently used as a gym area, adds to the outdoor appeal. A flatlet with a bedroom, lounge, and bathroom is perfect...

Features

Pets Allowed	Yes		
Interior		Exterior	Sizes
Bedrooms	3	Garages	1
Bathrooms	2	Carports / Parkings	2
Kitchens	1	Security	Yes
Recep. Rooms	2	Dom. Accom.	1
Studies	1	Pool	Yes
Furnished	No	Views	False
			Land Size
			1,177m²

Extras

Built In Braai Water Tanks Alarm System Electric Fencing Outdoor Beams Wendy House Lapa